



[Go to Product page](#)

Datasheet for ABIN951859

## anti-DDX60L antibody (C-Term)

### 2 Images

#### Overview

Quantity:	0.4 mL
Target:	DDX60L
Binding Specificity:	AA 1207-1236, C-Term
Reactivity:	Human
Host:	Rabbit
Clonality:	Polyclonal
Conjugate:	This DDX60L antibody is un-conjugated
Application:	Western Blotting (WB), Immunohistochemistry (Paraffin-embedded Sections) (IHC (p)), Enzyme Immunoassay (EIA)

#### Product Details

Immunogen:	KLH conjugated synthetic peptide between 1207-1236 amino acids from the C-terminal region of human DDX60L
Isotype:	Ig Fraction
Specificity:	This antibody recognizes Human DDX60L (C-term).
Purification:	Affinity Chromatography on Protein A

#### Target Details

Target:	DDX60L
Alternative Name:	DDX60L ( <a href="#">DDX60L Products</a> )

## Target Details

---

Background:	The specific function of the protein remains unknown.Synonyms: Probable ATP-dependent RNA helicase DDX60-like
Molecular Weight:	152182 Da
Gene ID:	91351
NCBI Accession:	<a href="#">NP_001012985</a>

## Application Details

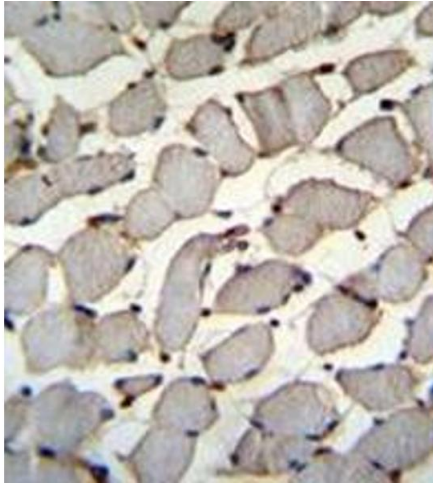
---

Application Notes:	Optimal working dilution should be determined by the investigator.
Restrictions:	For Research Use only

## Handling

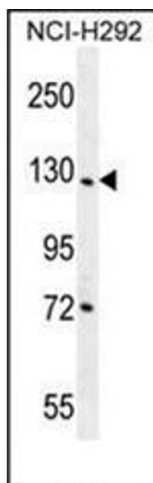
---

Format:	Liquid
Concentration:	0.25 mg/mL
Buffer:	PBS, 0.09 % Sodium Azide
Preservative:	Sodium azide
Precaution of Use:	This product contains sodium azide: a POISONOUS AND HAZARDOUS SUBSTANCE which should be handled by trained staff only.
Handling Advice:	Avoid repeated freezing and thawing.
Storage:	4 °C/-20 °C
Storage Comment:	Store undiluted at 2-8 °C for one month or (in aliquots) at -20 °C for longer.



### Immunohistochemistry (Paraffin-embedded Sections)

**Image 1.** Formalin fixed and paraffin embedded human skeletal muscle reacted with DDX60L Antibody (C-term) followed by peroxidase conjugation of the secondary antibody and DAB staining.



### Western Blotting

**Image 2.** Western blot analysis of DDX60L Antibody (C-term) in NCI-H292 cell line lysates (35ug/lane). This demonstrates the DDX60L antibody detected the DDX60L protein (arrow).