



Datasheet for ABIN951871  
**anti-DDX6 antibody (Middle Region)**



[Go to Product page](#)

2 Images

Overview

Quantity:	0.4 mL
Target:	DDX6
Binding Specificity:	AA 354-384, Middle Region
Reactivity:	Human
Host:	Rabbit
Clonality:	Polyclonal
Conjugate:	This DDX6 antibody is un-conjugated
Application:	Western Blotting (WB), Immunohistochemistry (Paraffin-embedded Sections) (IHC (p))

Product Details

Immunogen:	KLH conjugated synthetic peptide between 354~384 amino acids from the Central region of Human DDX6.
Isotype:	Ig Fraction
Specificity:	This antibody recognizes Human DEAD box protein 6 (Center).
Purification:	Affinity Chromatography on Protein A

Target Details

Target:	DDX6
Alternative Name:	DDX6 ( <a href="#">DDX6 Products</a> )
Background:	This gene encodes a member of the DEAD box protein family. The protein is an RNA helicase

## Target Details

---

found in P-bodies and stress granules, and functions in translation suppression and mRNA degradation. It is required for microRNA-induced gene silencing. Synonyms: ATP-dependent RNA helicase DDX6, ATP-dependent RNA helicase p54, DDX-6, DEAD box protein 6, HLR2, Oncogene RCK, RCK

Molecular Weight: 54417 Da

Gene ID: 1656

NCBI Accession: [NP\\_004388](#)

Pathways: [Ribonucleoprotein Complex Subunit Organization](#)

## Application Details

---

Application Notes: Optimal working dilution should be determined by the investigator.

Restrictions: For Research Use only

## Handling

---

Format: Liquid

Concentration: 0.25 mg/mL

Buffer: PBS, 0.09 % Sodium Azide

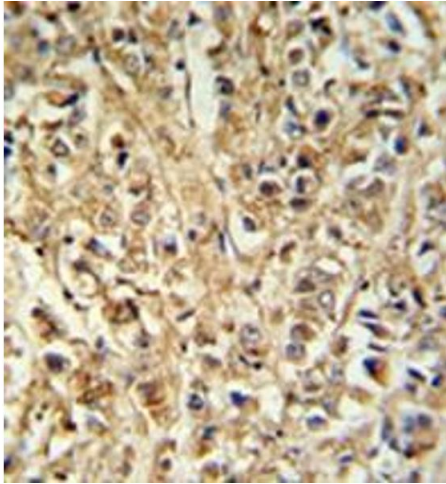
Preservative: Sodium azide

Precaution of Use: This product contains sodium azide: a POISONOUS AND HAZARDOUS SUBSTANCE which should be handled by trained staff only.

Handling Advice: Avoid repeated freezing and thawing.

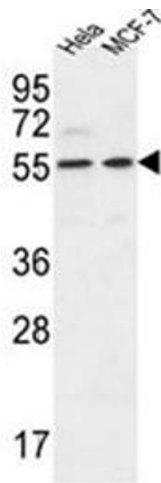
Storage: 4 °C/-20 °C

Storage Comment: Store undiluted at 2-8 °C for one month or (in aliquots) at -20 °C for longer.



### Immunohistochemistry (Paraffin-embedded Sections)

**Image 1.** Formalin fixed, paraffin embedded breast carcinoma reacted with DDX6 Antibody (Center) followed by peroxidase conjugation of the secondary antibody and DAB staining.



### Western Blotting

**Image 2.** Western blot analysis of DDX6 Antibody (Center) in HeLa, MCF-7 cell line lysates (35ug/lane). This demonstrates the DDX6 antibody detected the DDX6 protein (arrow).