

Datasheet for ABIN951874
anti-C11ORF58 antibody (N-Term)[Go to Product page](#)

4 Images

Overview

Quantity:	0.4 mL
Target:	C11ORF58
Binding Specificity:	AA 9-38, N-Term
Reactivity:	Human, Hamster, Mouse
Host:	Rabbit
Clonality:	Polyclonal
Conjugate:	This C11ORF58 antibody is un-conjugated
Application:	Immunohistochemistry (Paraffin-embedded Sections) (IHC (p)), Western Blotting (WB), Enzyme Immunoassay (EIA), Immunofluorescence (IF)

Product Details

Immunogen:	KLH conjugated synthetic peptide between 9-38 amino acids from the N-terminal region of human DEF
Isotype:	Ig Fraction
Specificity:	This antibody recognizes Human, Mouse, and Hamster DEF (N-term)
Purification:	Affinity Chromatography on Protein A

Target Details

Target:	C11ORF58
Alternative Name:	DEF (C11ORF58 Products)

Target Details

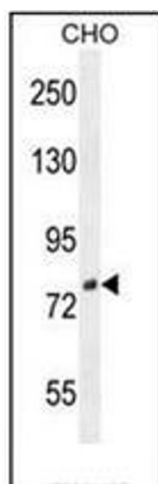
Background:	Regulates the p53 pathway to control the expansion growth of digestive organs (By similarity).Synonyms: C1orf107, Digestive organ expansion factor homolog
Molecular Weight:	87055 Da
Gene ID:	27042
NCBI Accession:	NP_055203

Application Details

Application Notes:	Optimal working dilution should be determined by the investigator.
Restrictions:	For Research Use only

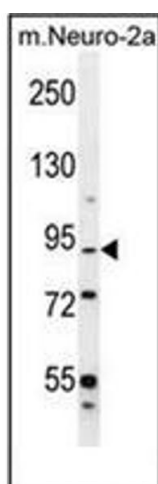
Handling

Format:	Liquid
Concentration:	0.25 mg/mL
Buffer:	PBS, 0.09 % Sodium Azide
Preservative:	Sodium azide
Precaution of Use:	This product contains sodium azide: a POISONOUS AND HAZARDOUS SUBSTANCE which should be handled by trained staff only.
Handling Advice:	Avoid repeated freezing and thawing.
Storage:	4 °C/-20 °C
Storage Comment:	Store undiluted at 2-8 °C for one month or (in aliquots) at -20 °C for longer.



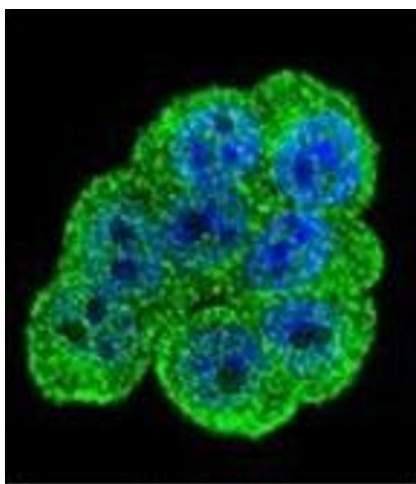
Western Blotting

Image 1. Western blot analysis of DEF Antibody (N-term) in CHO cell line lysates (35ug/lane). This demonstrates the DEF antibody detected the DEF protein (arrow).



Western Blotting

Image 2. Western blot analysis of DEF Antibody (N-term) in mouse Neuro-2a cell line lysates (35ug/lane). This demonstrates the DEF antibody detected the DEF protein (arrow).



Immunofluorescence

Image 3. Confocal immunofluorescent analysis of DEF Antibody (N-term) Cat.-No AP51229PU-N with HeLa cell followed by Alexa Fluor 488-conjugated goat anti-rabbit IgG (green). DAPI was used to stain the cell nuclear (blue).

Please check the [product details page](#) for more images. Overall 4 images are available for ABIN951874.