

Datasheet for ABIN951879  
**anti-DEK antibody (C-Term)**[Go to Product page](#)

## 4 Images

## Overview

Quantity:	0.4 mL
Target:	DEK
Binding Specificity:	AA 343-372, C-Term
Reactivity:	Human
Host:	Rabbit
Clonality:	Polyclonal
Conjugate:	This DEK antibody is un-conjugated
Application:	Western Blotting (WB), Immunofluorescence (IF), Flow Cytometry (FACS), Immunohistochemistry (Paraffin-embedded Sections) (IHC (p)), Enzyme Immunoassay (EIA)

## Product Details

Immunogen:	KLH conjugated synthetic peptide between 343~372 amino acids from the C-terminal region of human DEK
Isotype:	Ig Fraction
Specificity:	This antibody reacts to DEK.
Cross-Reactivity (Details):	Species reactivity (tested):Human.
Purification:	Affinity chromatography on Protein A

## Target Details

Target:	DEK
---------	-----

## Target Details

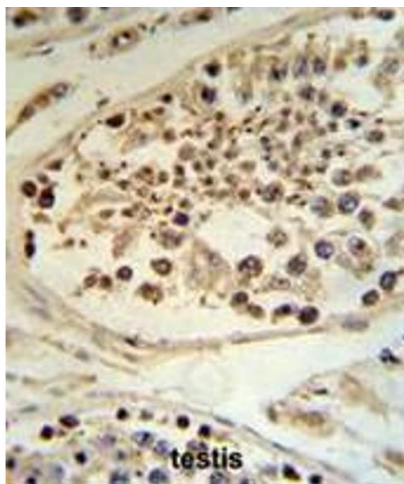
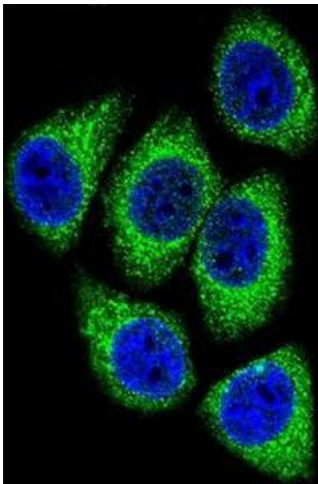
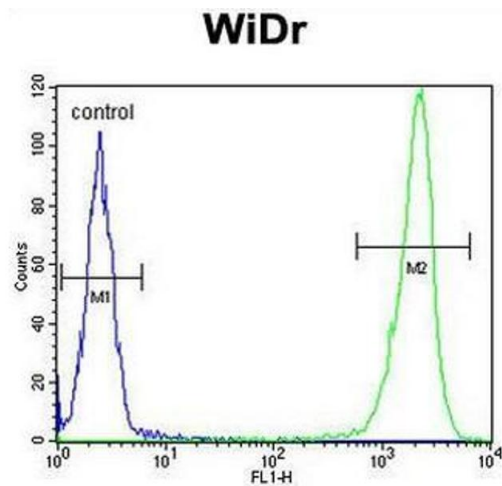
Alternative Name:	DEK ( <a href="#">DEK Products</a> )
Background:	DEK is a protein with one SAP domain. This protein binds to cruciform and superhelical DNA and induces positive supercoils into closed circular DNA, and is also involved in splice site selection during mRNA processing. Chromosomal aberrations involving this region, increased expression of this gene, and the presence of antibodies against this protein are all associated with various diseases.Synonyms: Protein DEK
Molecular Weight:	42674 Da
Gene ID:	7913
NCBI Accession:	<a href="#">NP_001128181</a>

## Application Details

Application Notes:	Optimal working dilution should be determined by the investigator.
Restrictions:	For Research Use only

## Handling

Format:	Liquid
Concentration:	0.25 mg/mL
Buffer:	PBS, 0.09 % (W/V) sodium azide
Preservative:	Sodium azide
Precaution of Use:	This product contains sodium azide: a POISONOUS AND HAZARDOUS SUBSTANCE which should be handled by trained staff only.
Handling Advice:	Avoid repeated freezing and thawing.
Storage:	4 °C/-20 °C
Storage Comment:	Store undiluted at 2-8 °C for one month or (in aliquots) at -20 °C for longer.



### Flow Cytometry

**Image 1.** DEK Antibody (C-term) flow cytometric analysis of WiDr cells (right histogram) compared to a negative control cell (left histogram). FITC-conjugated goat-anti-rabbit secondary antibodies were used for the analysis.

### Immunofluorescence

**Image 2.** Confocal immunofluorescent analysis of DEK Antibody (C-term) (Cat#AP51234PU-N) with HeLa cell followed by Alexa Fluor 488-conjugated goat anti-rabbit IgG (green). DAPI was used to stain the cell nuclear (blue).

### Immunohistochemistry (Paraffin-embedded Sections)

**Image 3.** DEK Antibody (C-term) IHC analysis in formalin fixed and paraffin embedded human testis tissue followed by peroxidase conjugation of the secondary antibody and DAB staining. This data demonstrates the use of the DEK Antibody (C-term) for immunohistochemistry. Clinical relevance has not been evaluated.

Please check the [product details page](#) for more images. Overall 4 images are available for ABIN951879.