

Datasheet for ABIN951909 anti-DIAPH2 antibody (Middle Region)



[Go to Product page](#)

3 Images

Overview

Quantity:	0.4 mL
Target:	DIAPH2
Binding Specificity:	AA 877-907, Middle Region
Reactivity:	Human
Host:	Rabbit
Clonality:	Polyclonal
Conjugate:	This DIAPH2 antibody is un-conjugated
Application:	Western Blotting (WB), Flow Cytometry (FACS), Immunohistochemistry (Paraffin-embedded Sections) (IHC (p)), Enzyme Immunoassay (EIA)

Product Details

Immunogen:	KLH conjugated synthetic peptide between 877~907 amino acids from the Central region of Human DIAPH2.
Isotype:	Ig Fraction
Specificity:	This antibody recognizes Human DIAPH2 (Center).
Purification:	Affinity Chromatography on Protein A

Target Details

Target:	DIAPH2
Alternative Name:	DIAPH2 (DIAPH2 Products)

Target Details

Background: DIAPH2 belongs to the diaphanous subfamily of the formin homology family of proteins. This gene may play a role in the development and normal function of the ovaries. Defects in this protein have been linked to premature ovarian failure 2.Synonyms: DIA, DRF, Diaphanous-related formin-2, diaphanous homolog 2

Molecular Weight: 125569 Da

Gene ID: 1730

NCBI Accession: [NP_006720](#)

Application Details

Application Notes: Optimal working dilution should be determined by the investigator.

Restrictions: For Research Use only

Handling

Format: Liquid

Concentration: 0.25 mg/mL

Buffer: PBS, 0.09 % Sodium Azide

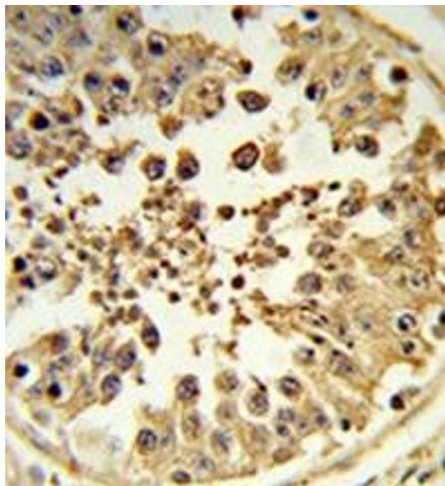
Preservative: Sodium azide

Precaution of Use: This product contains sodium azide: a POISONOUS AND HAZARDOUS SUBSTANCE which should be handled by trained staff only.

Handling Advice: Avoid repeated freezing and thawing.

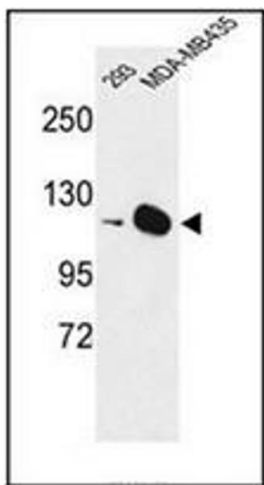
Storage: 4 °C/-20 °C

Storage Comment: Store undiluted at 2-8 °C for one month or (in aliquots) at -20 °C for longer.



Immunohistochemistry (Paraffin-embedded Sections)

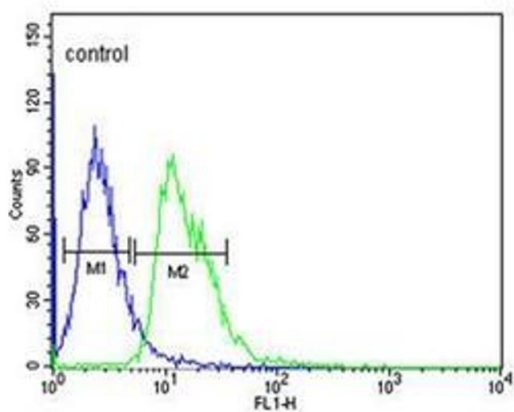
Image 1. Formalin-fixed and paraffin-embedded human testis tissue reacted with DIAPH2 Antibody , which was peroxidase-conjugated to the secondary antibody, followed by DAB staining.



Western Blotting

Image 2. Western blot analysis of DIAPH2 Antibody in 293, MDA-MB435 cell line lysates (35ug/lane). DIAPH2 (arrow) was detected using the purified Pab.

CEM



Flow Cytometry

Image 3. Flow cytometric analysis of CEM cells using DIAPH2 Antibody (right histogram) compared to a negative control cell (left histogram). FITC-conjugated goat-anti-rabbit secondary antibodies were used for the analysis.