

Datasheet for ABIN951910  
**anti-DIAPH3 antibody (C-Term)**



[Go to Product page](#)

1 Image

## Overview

Quantity:	0.4 mL
Target:	DIAPH3
Binding Specificity:	AA 1060-1090, C-Term
Reactivity:	Human
Host:	Rabbit
Clonality:	Polyclonal
Conjugate:	This DIAPH3 antibody is un-conjugated
Application:	Western Blotting (WB), Enzyme Immunoassay (EIA)

## Product Details

Immunogen:	KLH conjugated synthetic peptide between 1060-1090 amino acids from the C-terminal region of human DIAPH3.
Isotype:	Ig Fraction
Specificity:	This antibody recognizes Human DIAPH3 (C-term).
Purification:	Affinity Chromatography on Protein A

## Target Details

Target:	DIAPH3
Alternative Name:	DIAPH3 ( <a href="#">DIAPH3 Products</a> )
Background:	DIAPH3 binds to GTP-bound form of Rho and to profilin. Acts in a Rho-dependent manner to

## Target Details

recruit profilin to the membrane, where it promotes actin polymerization. It is required for cytokinesis, stress fiber formation, and transcriptional activation of the serum response factor. DFR proteins couple Rho and Src tyrosine kinase during signaling and the regulation of actin dynamics (By similarity).Synonyms: DIAP3, DRF3, Diaphanous homolog 3, Diaphanous-3, Diaphanous-related formin-3

Molecular Weight: 136926 Da

Gene ID: 81624

NCBI Accession: [NP\\_001035982](#)

## Application Details

Application Notes: Optimal working dilution should be determined by the investigator.

Restrictions: For Research Use only

## Handling

Format: Liquid

Concentration: 0.25 mg/mL

Buffer: PBS, 0.09 % Sodium Azide

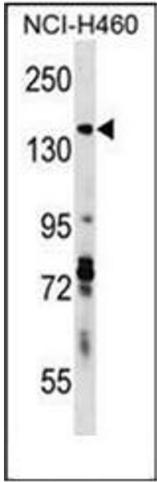
Preservative: Sodium azide

Precaution of Use: This product contains sodium azide: a POISONOUS AND HAZARDOUS SUBSTANCE which should be handled by trained staff only.

Handling Advice: Avoid repeated freezing and thawing.

Storage: 4 °C/-20 °C

Storage Comment: Store undiluted at 2-8 °C for one month or (in aliquots) at -20 °C for longer.



Western Blotting

**Image 1.** Western blot analysis of DIAPH3 Antibody