

Datasheet for ABIN951915
anti-DIRAS1 antibody (Middle Region)

3 Images

[Go to Product page](#)

Overview

Quantity:	0.4 mL
Target:	DIRAS1
Binding Specificity:	AA 115-145, Middle Region
Reactivity:	Human
Host:	Rabbit
Clonality:	Polyclonal
Conjugate:	This DIRAS1 antibody is un-conjugated
Application:	Western Blotting (WB), Flow Cytometry (FACS), Immunohistochemistry (Paraffin-embedded Sections) (IHC (p)), Enzyme Immunoassay (EIA)

Product Details

Immunogen:	KLH conjugated synthetic peptide between 115~145 amino acids from the Central region of human DIRAS1
Isotype:	Ig Fraction
Specificity:	This antibody recognizes Human DIRAS1 (Center).
Purification:	Affinity Chromatography on Protein A

Target Details

Target:	DIRAS1
Alternative Name:	DIRAS1 (DIRAS1 Products)

Target Details

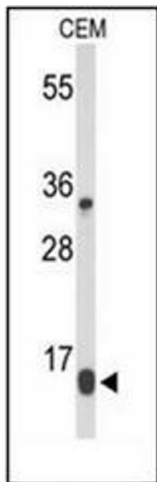
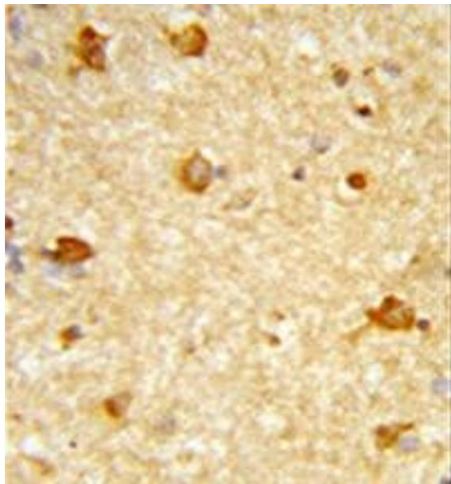
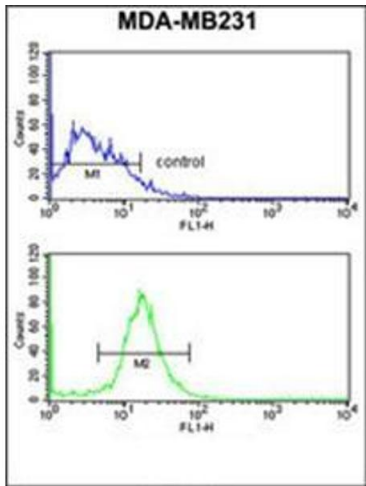
Background:	DIRAS1 belongs to a distinct branch of the functionally diverse Ras (see HRAS, MIM 190020) superfamily of monomeric GTPases. Synonyms: Di-Ras1, Distinct subgroup of the Ras family member 1, GBTS1, GTP-binding protein Di-Ras1, RIG, Ras-related inhibitor of cell growth, Small GTP-binding tumor suppressor 1
Molecular Weight:	22329 Da
Gene ID:	148252
NCBI Accession:	NP_660156
Pathways:	Ribonucleoprotein Complex Subunit Organization , Ribosome Assembly

Application Details

Application Notes:	Optimal working dilution should be determined by the investigator.
Restrictions:	For Research Use only

Handling

Format:	Liquid
Concentration:	0.25 mg/mL
Buffer:	PBS, 0.09 % Sodium Azide
Preservative:	Sodium azide
Precaution of Use:	This product contains sodium azide: a POISONOUS AND HAZARDOUS SUBSTANCE which should be handled by trained staff only.
Handling Advice:	Avoid repeated freezing and thawing.
Storage:	4 °C/-20 °C
Storage Comment:	Store undiluted at 2-8 °C for one month or (in aliquots) at -20 °C for longer.



Flow Cytometry

Image 1. Flow cytometry analysis of MDA-MB231 cells using DIRAS1 Antibody (bottom histogram) compared to a negative control cell (top histogram). FITC-conjugated goat-anti-rabbit secondary antibodies were used for the analysis.

Immunohistochemistry (Paraffin-embedded Sections)

Image 2. Formalin-fixed and paraffin-embedded human brain tissue reacted with DIRAS1 Antibody, which was peroxidase-conjugated to the secondary antibody, followed by DAB staining.

Western Blotting

Image 3. Western blot analysis of DIRAS1 Antibody in CEM cell line lysates (35ug/lane). DIRAS1 (arrow) was detected using the purified Pab.