



[Go to Product page](#)

Datasheet for ABIN951916

anti-DIS3 antibody (Middle Region)

2 Images

Overview

Quantity:	0.4 mL
Target:	DIS3
Binding Specificity:	AA 302-331, Middle Region
Reactivity:	Human, Mouse
Host:	Rabbit
Clonality:	Polyclonal
Conjugate:	This DIS3 antibody is un-conjugated
Application:	Western Blotting (WB), Immunohistochemistry (Paraffin-embedded Sections) (IHC (p)), Enzyme Immunoassay (EIA)

Product Details

Immunogen:	KLH conjugated synthetic peptide between 302-331 amino acids from the Central region of human DIS3
Isotype:	Ig Fraction
Specificity:	This antibody recognizes Human and Mouse DIS3 (Center).
Purification:	Affinity Chromatography on Protein A

Target Details

Target:	DIS3
Alternative Name:	DIS3 (DIS3 Products)

Target Details

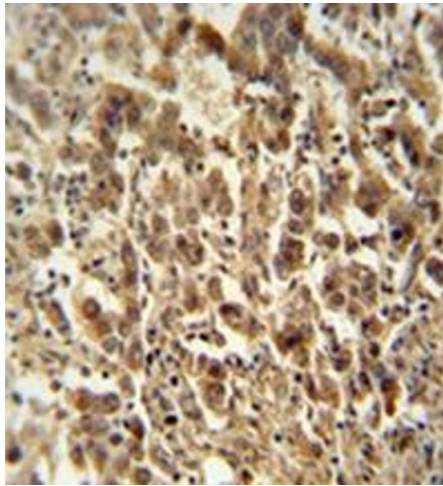
Background:	Synonyms: DIS3, Exosome complex exonuclease RRP44, KIAA1008, Protein DIS3 homolog, RRP44, Ribosomal RNA-processing protein 44
Molecular Weight:	109003 Da
Gene ID:	22894
NCBI Accession:	NP_001121698

Application Details

Application Notes:	Optimal working dilution should be determined by the investigator.
Restrictions:	For Research Use only

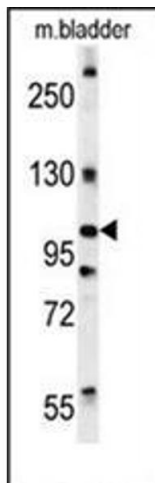
Handling

Format:	Liquid
Concentration:	0.25 mg/mL
Buffer:	PBS, 0.09 % Sodium Azide
Preservative:	Sodium azide
Precaution of Use:	This product contains sodium azide: a POISONOUS AND HAZARDOUS SUBSTANCE which should be handled by trained staff only.
Handling Advice:	Avoid repeated freezing and thawing.
Storage:	4 °C/-20 °C
Storage Comment:	Store undiluted at 2-8 °C for one month or (in aliquots) at -20 °C for longer.



Immunohistochemistry (Paraffin-embedded Sections)

Image 1. Formalin fixed and paraffin embedded human testis carcinoma reacted with DIS3 Antibody followed by peroxidase conjugation of the secondary antibody and DAB staining.



Western Blotting

Image 2. Western blot analysis of DIS3 Antibody in mouse bladder tissue lysates (15ug/lane). This demonstrates the DIS3 antibody detected DIS3 protein (arrow).