

Datasheet for ABIN951917
anti-DISC1 antibody (C-Term)

3 Images

[Go to Product page](#)

Overview

Quantity:	0.4 mL
Target:	DISC1
Binding Specificity:	AA 700-728, C-Term
Reactivity:	Human
Host:	Rabbit
Clonality:	Polyclonal
Conjugate:	This DISC1 antibody is un-conjugated
Application:	Western Blotting (WB), Immunohistochemistry (Paraffin-embedded Sections) (IHC (p)), Flow Cytometry (FACS), Enzyme Immunoassay (EIA)

Product Details

Immunogen:	KLH conjugated synthetic peptide between 700-728 amino acids from the C-terminal region of Human DISC1.
Isotype:	Ig Fraction
Specificity:	This antibody recognizes Human DISC1 (C-term).
Purification:	Affinity Chromatography on Protein A

Target Details

Target:	DISC1
Alternative Name:	DISC1 (DISC1 Products)

Target Details

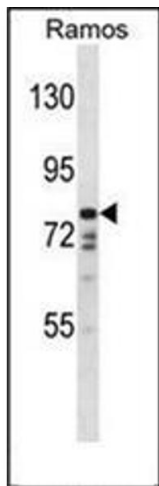
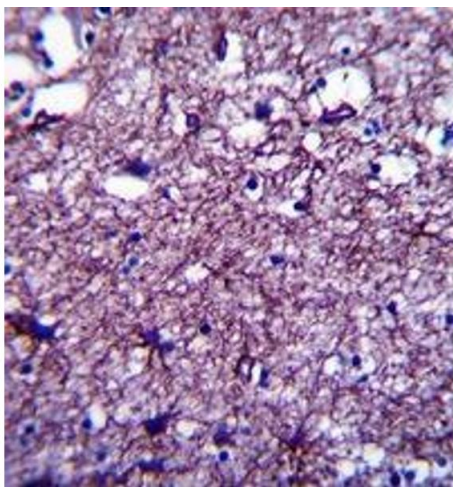
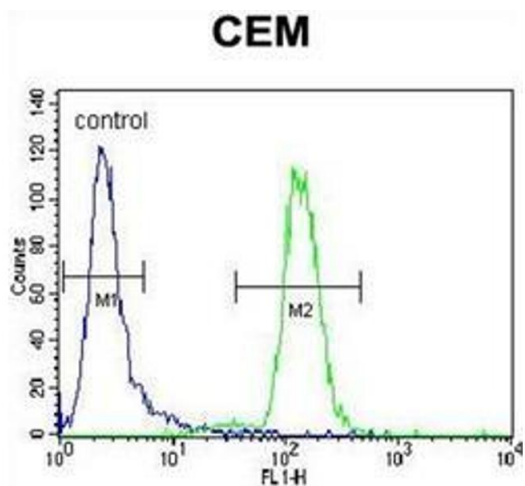
Background:	This gene encodes a protein with multiple coiled coil motifs which is located in the nucleus, cytoplasm and mitochondria. The protein is involved in neurite outgrowth and cortical development through its interaction with other proteins. This gene is disrupted in a t(1,11)(q42.1,q14.3) translocation which segregates with schizophrenia and related psychiatric disorders in a large Scottish family. Alternate transcriptional splice variants, encoding different isoforms, have been characterized. [provided by RefSeq].Synonyms: DISC-1, Disrupted in schizophrenia 1 protein, KIAA0457
Molecular Weight:	93611 Da
Gene ID:	27185
NCBI Accession:	NP_001012975
Pathways:	Regulation of Cell Size

Application Details

Application Notes:	Optimal working dilution should be determined by the investigator.
Restrictions:	For Research Use only

Handling

Format:	Liquid
Concentration:	0.25 mg/mL
Buffer:	PBS, 0.09 % Sodium Azide
Preservative:	Sodium azide
Precaution of Use:	This product contains sodium azide: a POISONOUS AND HAZARDOUS SUBSTANCE which should be handled by trained staff only.
Handling Advice:	Avoid repeated freezing and thawing.
Storage:	4 °C/-20 °C
Storage Comment:	Store undiluted at 2-8 °C for one month or (in aliquots) at -20 °C for longer.



Flow Cytometry

Image 1. Flow cytometric analysis of CEM cells using DISC1 Antibody (C-term) Cat.-No AP51267PU-N (right histogram) compared to a negative control cell (left histogram). FITC-conjugated goat-anti-rabbit secondary antibodies were used for the analysis.

Immunohistochemistry (Paraffin-embedded Sections)

Image 2. Formalin fixed and paraffin embedded human brain tissue reacted with DISC1 Antibody (C-term) followed by peroxidase conjugation of the secondary antibody and DAB staining.

Western Blotting

Image 3. Western blot analysis of DISC1 Antibody (C-term) in Ramos cell line lysates (35ug/lane). This demonstrates the DISC1 antibody detected the DISC1 protein (arrow).