



[Go to Product page](#)

Datasheet for ABIN951920  
**anti-DVL3 antibody (C-Term)**

3 Images

Overview

Quantity:	0.4 mL
Target:	DVL3
Binding Specificity:	AA 537-565, C-Term
Reactivity:	Human
Host:	Rabbit
Clonality:	Polyclonal
Conjugate:	This DVL3 antibody is un-conjugated
Application:	Western Blotting (WB), Immunofluorescence (IF), Immunohistochemistry (Paraffin-embedded Sections) (IHC (p)), Enzyme Immunoassay (EIA)

Product Details

Immunogen:	KLH conjugated synthetic peptide between 537-565 amino acids from the C-terminal region of Human DVL3.
Isotype:	Ig Fraction
Specificity:	This antibody recognizes Human Dishevelled-3 / DVL3 (C-term).
Purification:	Affinity Chromatography on Protein A

Target Details

Target:	DVL3
Alternative Name:	Dishevelled-3 / DVL3 ( <a href="#">DVL3 Products</a> )

## Target Details

---

Background:	This gene is a member of a multi-gene family which shares strong similarity with the Drosophila dishevelled gene, dsh. The Drosophila dishevelled gene encodes a cytoplasmic phosphoprotein that regulates cell proliferation.Synonyms: DSH homolog 3, KIAA0208, Segment polarity protein dishevelled homolog DVL-3
Molecular Weight:	78055 Da
Gene ID:	1857
NCBI Accession:	<a href="#">NP_004414</a>

## Application Details

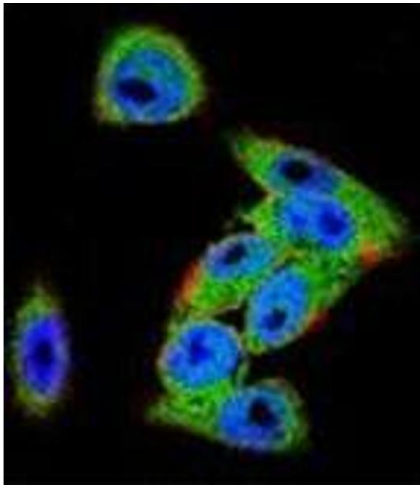
---

Application Notes:	Optimal working dilution should be determined by the investigator.
Restrictions:	For Research Use only

## Handling

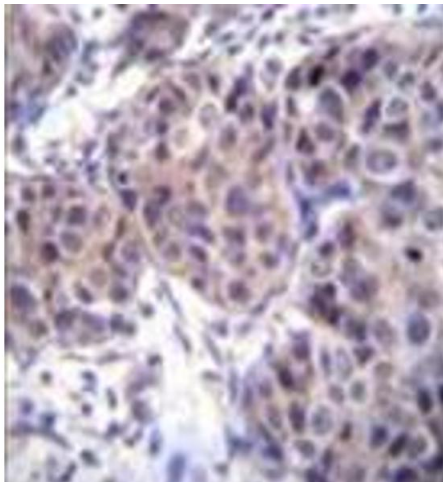
---

Format:	Liquid
Concentration:	0.25 mg/mL
Buffer:	PBS containing 0.09 % (W/V) Sodium Azide as preservative
Preservative:	Sodium azide
Precaution of Use:	This product contains sodium azide: a POISONOUS AND HAZARDOUS SUBSTANCE which should be handled by trained staff only.
Handling Advice:	Avoid repeated freezing and thawing.
Storage:	4 °C/-20 °C
Storage Comment:	Store undiluted at 2-8 °C for one month or (in aliquots) at -20 °C for longer.



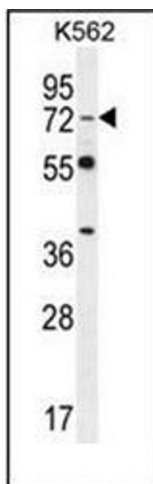
### Immunofluorescence

**Image 1.** Confocal immunofluorescent analysis of Dishevelled-3 / DVL3 Antibody (C-term) Cat.-No AP51346PU-N with A375 cell followed by Alexa Fluor 488-conjugated goat anti-rabbit IgG (green). Actin filaments have been labeled with Alexa Fluor 555 phalloidin (red). DAPI was used to stain the cell nuclear (blue).



### Immunohistochemistry (Paraffin-embedded Sections)

**Image 2.** Formalin fixed and paraffin embedded human breast carcinoma reacted with Dishevelled-3 / DVL3 Antibody (C-term) followed by peroxidase conjugation of the secondary antibody and DAB staining.



### Western Blotting

**Image 3.** Western blot analysis of Dishevelled-3 / DVL3 Antibody (C-term) in K562 cell line lysates (35ug/lane). This demonstrates the DVL3 antibody detected the DVL3 protein (arrow).