



[Go to Product page](#)

Datasheet for ABIN951924
anti-DLL3 antibody (C-Term)

3 Images

Overview

Quantity:	200 µL
Target:	DLL3
Binding Specificity:	AA 526-556, C-Term
Reactivity:	Human
Host:	Rabbit
Clonality:	Polyclonal
Conjugate:	This DLL3 antibody is un-conjugated
Application:	Western Blotting (WB), Immunofluorescence (IF), Immunohistochemistry (Paraffin-embedded Sections) (IHC (p)), Enzyme Immunoassay (EIA)

Product Details

Immunogen:	Synthetic peptide - KLH conjugated - corresponding to the C-terminal region (between 526-556aa) of human DLL3.
Isotype:	Ig Fraction
Specificity:	This antibody recognizes DLL3 at C-term .
Cross-Reactivity (Details):	Species reactivity (tested):Human
Purification:	Purified through a Protein A column followed by peptide affinity purification

Target Details

Target:	DLL3
---------	------

Target Details

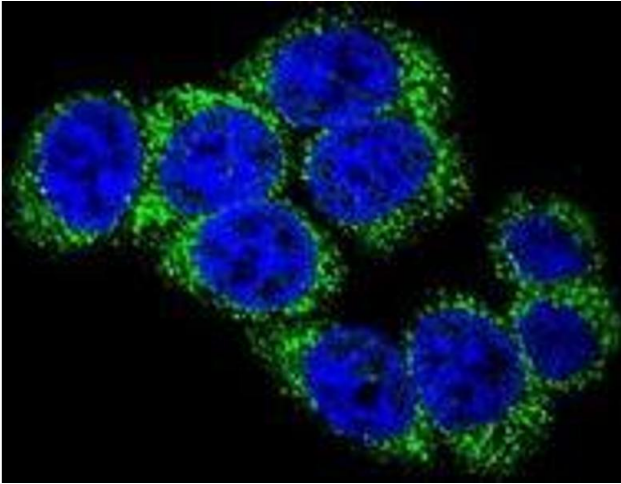
Alternative Name:	DLL3 (DLL3 Products)
Background:	Delta-like protein 3 is a ligand for the Notch signaling pathway. It inhibits primary neurogenesis. DLL3 plays a role in the formation of somite boundaries during segmentation of the paraxial mesoderm. Defects in DLL3 are the cause of Spondylocostal dysostosis autosomal recessive type 1 (SCD01). Mutations in DLL3 gene cause truncal shortening relative to their limbs, which leads to abdominal protrusion, abnormal spinal curvature and sometimes a plagiocephaly-torticollis sequence. It may be required to divert neurons along a specific differentiation pathway. Synonyms: Delta-3, Delta-like protein 3
Gene ID:	10683
NCBI Accession:	NP_058637
Pathways:	Notch Signaling

Application Details

Application Notes:	Optimal working dilution should be determined by the investigator.
Restrictions:	For Research Use only

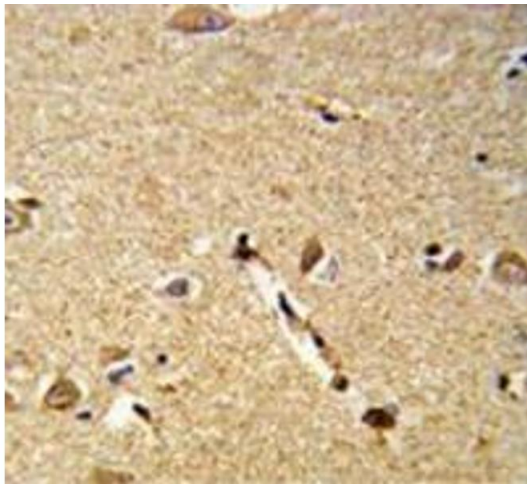
Handling

Format:	Liquid
Concentration:	0.25 mg/mL
Buffer:	PBS with 0.09 % (W/V) Sodium azide
Preservative:	Sodium azide
Precaution of Use:	This product contains sodium azide: a POISONOUS AND HAZARDOUS SUBSTANCE which should be handled by trained staff only.
Handling Advice:	Avoid repeated freezing and thawing.
Storage:	4 °C/-20 °C
Storage Comment:	Store undiluted at 2-8 °C for one month or (in aliquots) at -20 °C for longer.



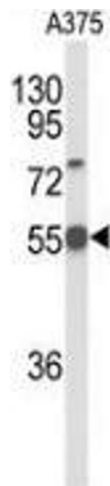
Immunofluorescence

Image 1. Confocal immunofluorescent analysis with 293 cell using DLL3 Antibody (C-term), followed by Alexa Fluor 488-conjugated goat anti-rabbit IgG (green). DAPI was used to stain the cell nuclear (blue).



Immunohistochemistry (Paraffin-embedded Sections)

Image 2. Immunohistochemistry analysis of human brain tissue (Formalin-fixed, Paraffin-embedded) using DLL3 Antibody (C-term), followed by peroxidase-conjugated secondary antibody and DAB staining. This data demonstrates the use of this antibody for IHC. Clinical relevance has not been evaluated.



Western Blotting

Image 3. Western blot analysis of DLL3 (arrow) in A375 cell line lysates (35ug/lane) using DLL3