

Datasheet for ABIN951926
anti-DMC1 antibody (N-Term)

3 Images

[Go to Product page](#)

Overview

Quantity:	0.4 mL
Target:	DMC1
Binding Specificity:	AA 1-30, N-Term
Reactivity:	Human
Host:	Rabbit
Clonality:	Polyclonal
Conjugate:	This DMC1 antibody is un-conjugated
Application:	Western Blotting (WB), Flow Cytometry (FACS), Immunohistochemistry (Paraffin-embedded Sections) (IHC (p)), Enzyme Immunoassay (EIA)

Product Details

Immunogen:	KLH conjugated synthetic peptide between 1~30 amino acids from the N-terminal region of human DMC1
Isotype:	Ig Fraction
Specificity:	This antibody recognizes Human DMC1 / LIM15 (N-term).
Purification:	Affinity Chromatography on Protein A

Target Details

Target:	DMC1
Alternative Name:	DMC1 / LIM15 (DMC1 Products)

Target Details

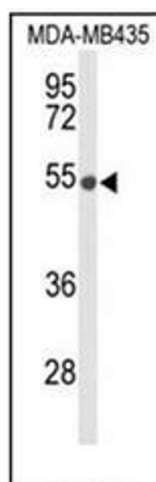
Background:	DMC1 is essential for meiotic homologous recombination. Genetic recombination in meiosis plays an important role in generating diversity of genetic information. This protein is structurally and evolutionary related to the products of the yeast RAD51 and E. coli RecA genes.Synonyms: DMC1H, Meiotic recombination protein DMC1/LIM15 homolog
Molecular Weight:	37681 Da
Gene ID:	11144
NCBI Accession:	NP_008999

Application Details

Application Notes:	Optimal working dilution should be determined by the investigator.
Restrictions:	For Research Use only

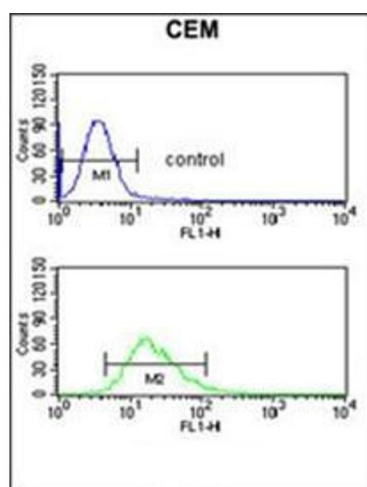
Handling

Format:	Liquid
Concentration:	0.25 mg/mL
Buffer:	PBS, 0.09 % Sodium Azide
Preservative:	Sodium azide
Precaution of Use:	This product contains sodium azide: a POISONOUS AND HAZARDOUS SUBSTANCE which should be handled by trained staff only.
Handling Advice:	Avoid repeated freezing and thawing.
Storage:	4 °C/-20 °C
Storage Comment:	Store undiluted at 2-8 °C for one month or (in aliquots) at -20 °C for longer.



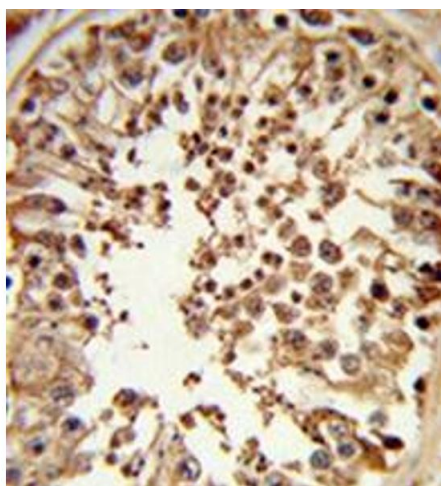
Western Blotting

Image 1. Western blot analysis of DMC1 Antibody (N-term) in MDA-MB435 cell line lysates (35ug/lane). DMC1 (arrow) was detected using the purified Pab.



Flow Cytometry

Image 2. Flow cytometric analysis of CEM cells using DMC1 Antibody (N-term) (bottom histogram) compared to a negative control cell (top histogram). FITC-conjugated goat-anti-rabbit secondary antibodies were used for the analysis.



Immunohistochemistry (Paraffin-embedded Sections)

Image 3. Formalin-fixed and paraffin-embedded human testis tissue reacted with DMC1 antibody (N-term) followed by peroxidase-conjugated secondary antibody and DAB staining.