



[Go to Product page](#)

Datasheet for ABIN951937
anti-DNAH2 antibody (N-Term)

1 Image

Overview

Quantity:	0.4 mL
Target:	DNAH2
Binding Specificity:	AA 439-468, N-Term
Reactivity:	Human
Host:	Rabbit
Clonality:	Polyclonal
Conjugate:	This DNAH2 antibody is un-conjugated
Application:	Western Blotting (WB), Enzyme Immunoassay (EIA)

Product Details

Immunogen:	KLH conjugated synthetic peptide between 439-468 amino acids from the N-terminal region of Human DNAH2
Isotype:	Ig Fraction
Specificity:	This antibody recognizes Human DNAH2 (N-term).
Purification:	Affinity Chromatography on Protein A

Target Details

Target:	DNAH2
Alternative Name:	DNAH2 (DNAH2 Products)
Background:	Dyneins are microtubule-associated motor protein complexes composed of several heavy, light,

Target Details

and intermediate chains. The axonemal dyneins, found in cilia and flagella, are components of the outer and inner dynein arms attached to the peripheral microtubule doublets. DNAH2 is an axonemal inner arm dynein heavy chain (Chapelin et al., 1997 [PubMed 9256245]).Synonyms: DNAHC2, DNHD3, Dynein heavy chain 2, KIAA1503, axonemal

Molecular Weight: 100kd

Gene ID: 146754

NCBI Accession: [NP_065928](#)

Application Details

Application Notes: Optimal working dilution should be determined by the investigator.

Restrictions: For Research Use only

Handling

Format: Liquid

Concentration: 0.25 mg/mL

Buffer: PBS, 0.09 % Sodium Azide

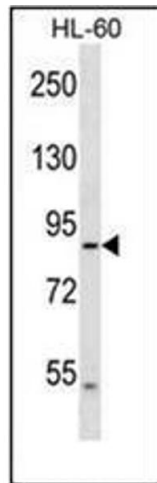
Preservative: Sodium azide

Precaution of Use: This product contains sodium azide: a POISONOUS AND HAZARDOUS SUBSTANCE which should be handled by trained staff only.

Handling Advice: Avoid repeated freezing and thawing.

Storage: 4 °C/-20 °C

Storage Comment: Store undiluted at 2-8 °C for one month or (in aliquots) at -20 °C for longer.



Western Blotting

Image 1. Western blot analysis of DNAH2 Antibody (N-term) in HL-60 cell line lysates (35ug/lane). This demonstrates the DNAH2 antibody detected the DNAH2 protein (arrow).