

Datasheet for ABIN951974
anti-DPEP3 antibody (C-Term)[Go to Product page](#)

2 Images

Overview

Quantity:	0.4 mL
Target:	DPEP3
Binding Specificity:	AA 394-424, C-Term
Reactivity:	Human, Mouse
Host:	Rabbit
Clonality:	Polyclonal
Conjugate:	This DPEP3 antibody is un-conjugated
Application:	Western Blotting (WB), Enzyme Immunoassay (EIA)

Product Details

Immunogen:	KLH conjugated synthetic peptide between 394-424 amino acids from the C-terminal region of Human DPEP3
Isotype:	Ig Fraction
Specificity:	This antibody recognizes Human and Mouse DPEP3 (C-term).
Purification:	Affinity Chromatography on Protein A

Target Details

Target:	DPEP3
Alternative Name:	DPEP3 (DPEP3 Products)
Background:	This gene encodes a membrane-bound glycoprotein from the family of dipeptidases involved in

Target Details

hydrolytic metabolism of various dipeptides, including penem and carbapenem beta-lactam antibiotics. This gene is located on chromosome 16 in a cluster with another member of this family. Alternatively spliced transcript variants that encode different isoforms have been found for this gene. Synonyms: Dipeptidase 3

Molecular Weight: 53687 Da

Gene ID: 64180

NCBI Accession: [NP_001123230](#)

Application Details

Application Notes: Optimal working dilution should be determined by the investigator.

Restrictions: For Research Use only

Handling

Format: Liquid

Concentration: 0.25 mg/mL

Buffer: PBS with 0.09 % (W/V) Sodium Azide as preservative

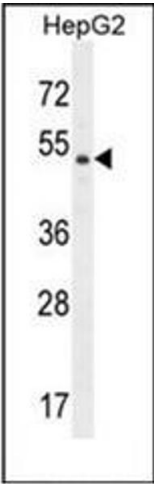
Preservative: Sodium azide

Precaution of Use: This product contains sodium azide: a POISONOUS AND HAZARDOUS SUBSTANCE which should be handled by trained staff only.

Handling Advice: Avoid repeated freezing and thawing.

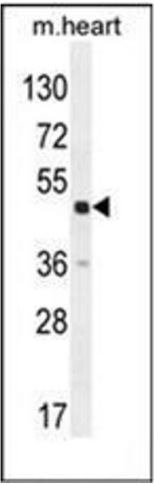
Storage: 4 °C/-20 °C

Storage Comment: Store undiluted at 2-8 °C for one month or (in aliquots) at -20 °C for longer.



Western Blotting

Image 1. Western blot analysis of DPEP3 Antibody (C-term) in HepG2 cell line lysates (35ug/lane). This demonstrates the DPEP3 antibody detected the DPEP3 protein (arrow).



Western Blotting

Image 2. Western blot analysis of DPEP3 Antibody (C-term) in mouse heart tissue lysates (35ug/lane). This demonstrates the DPEP3 antibody detected the DPEP3 protein (arrow).