

Datasheet for ABIN951980
anti-DPY19L1 antibody (C-Term)



[Go to Product page](#)

3 Images

Overview

Quantity:	0.4 mL
Target:	DPY19L1
Binding Specificity:	AA 560-590, C-Term
Reactivity:	Human
Host:	Rabbit
Clonality:	Polyclonal
Conjugate:	This DPY19L1 antibody is un-conjugated
Application:	Western Blotting (WB), Flow Cytometry (FACS), Immunohistochemistry (Paraffin-embedded Sections) (IHC (p)), Enzyme Immunoassay (EIA)

Product Details

Immunogen:	conjugated synthetic peptide between 560-590 amino acids from the C-terminal region of human DPY19L1.
Isotype:	Ig Fraction
Specificity:	This antibody recognizes Human DPY19L1 (C-term).
Purification:	Affinity Chromatography on Protein A

Target Details

Target:	DPY19L1
Alternative Name:	DPY19L1 (DPY19L1 Products)

Target Details

Background:	Belongs to the DPY19 family. There are two named isoforms. The specific function of DPY19L1 is not yet known.Synonyms: GA0500, KIAA0877, Protein dpy-19 homolog 1
Molecular Weight:	77319 Da
Gene ID:	23333
NCBI Accession:	NP_056098
Pathways:	SARS-CoV-2 Protein Interactome

Application Details

Application Notes:	Optimal working dilution should be determined by the investigator.
Restrictions:	For Research Use only

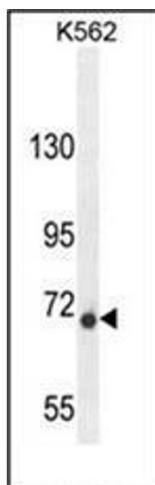
Handling

Format:	Liquid
Concentration:	0.25 mg/mL
Buffer:	PBS with 0.09 % (W/V) Sodium Azide as preservative
Preservative:	Sodium azide
Precaution of Use:	This product contains sodium azide: a POISONOUS AND HAZARDOUS SUBSTANCE which should be handled by trained staff only.
Handling Advice:	Avoid repeated freezing and thawing.
Storage:	4 °C/-20 °C
Storage Comment:	Store undiluted at 2-8 °C for one month or (in aliquots) at -20 °C for longer.



Immunohistochemistry (Paraffin-embedded Sections)

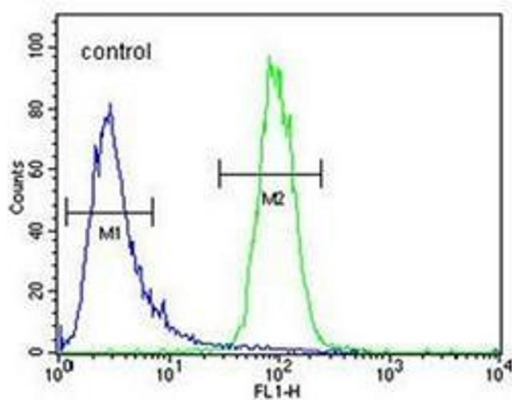
Image 1. Formalin fixed and paraffin embedded human brain tissue reacted with DPY19L1 Antibody (C-term) followed by peroxidase conjugation of the secondary antibody and DAB staining.



Western Blotting

Image 2. Western blot analysis of DPY19L1 Antibody (C-term) in K562 cell line lysates (35ug/lane). This demonstrates the DPY19L1 antibody detected the DPY19L1 protein (arrow).

K562



Flow Cytometry

Image 3. Flow cytometric analysis of K562 cells using DPY19L1 Antibody (C-term) Cat.-No AP51316PU-N (right histogram) compared to a negative control cell (left histogram). FITC-conjugated goat-anti-rabbit secondary antibodies were used for the analysis.