

Datasheet for ABIN951983
anti-DRG1 antibody (C-Term)

2 Images

[Go to Product page](#)

Overview

Quantity:	0.4 mL
Target:	DRG1
Binding Specificity:	AA 333-363, C-Term
Reactivity:	Human
Host:	Rabbit
Clonality:	Polyclonal
Conjugate:	This DRG1 antibody is un-conjugated
Application:	Western Blotting (WB), Immunohistochemistry (Paraffin-embedded Sections) (IHC (p)), Enzyme Immunoassay (EIA)

Product Details

Immunogen:	KLH conjugated synthetic peptide between 333-363 amino acids from the C-terminal region of Human DRG1
Isotype:	Ig Fraction
Specificity:	This antibody recognizes Human DRG1 / NEDD3 (C-term).
Purification:	Affinity Chromatography on Protein A

Target Details

Target:	DRG1
Alternative Name:	DRG1 / NEDD3 (DRG1 Products)

Target Details

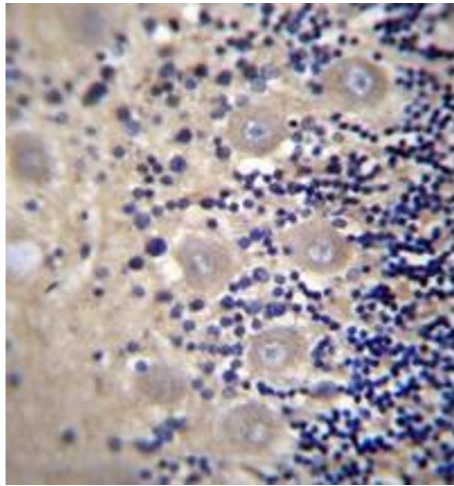
Background:	DRG1 may play a role in cell proliferation, differentiation and death.Synonyms: DRG-1, Developmentally-regulated GTP-binding protein 1, NEDD-3, Neural precursor cell expressed developmentally down-regulated protein 3
Molecular Weight:	40542 Da
Gene ID:	4733
NCBI Accession:	NP_004138

Application Details

Application Notes:	Optimal working dilution should be determined by the investigator.
Restrictions:	For Research Use only

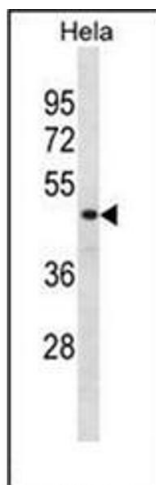
Handling

Format:	Liquid
Concentration:	0.25 mg/mL
Buffer:	PBS with 0.09 % (W/V) Sodium Azide as preservative
Preservative:	Sodium azide
Precaution of Use:	This product contains sodium azide: a POISONOUS AND HAZARDOUS SUBSTANCE which should be handled by trained staff only.
Handling Advice:	Avoid repeated freezing and thawing.
Storage:	4 °C/-20 °C
Storage Comment:	Store undiluted at 2-8 °C for one month or (in aliquots) at -20 °C for longer.



Immunohistochemistry (Paraffin-embedded Sections)

Image 1. Formalin fixed and paraffin embedded human cerebellum tissue reacted with DRG1 / NEDD3 Antibody (C-term) followed by peroxidase conjugation of the secondary antibody and DAB staining.



Western Blotting

Image 2. Western blot analysis of DRG1 / NEDD3 Antibody (C-term) in HeLa cell line lysates (35ug/lane). This demonstrates the DRG1 antibody detected the DRG1 protein (arrow).