

Datasheet for ABIN951990

anti-DTWD1 antibody (Middle Region)[Go to Product page](#)**1** Image

Overview

Quantity:	0.4 mL
Target:	DTWD1
Binding Specificity:	AA 151-181, Middle Region
Reactivity:	Human
Host:	Rabbit
Clonality:	Polyclonal
Conjugate:	This DTWD1 antibody is un-conjugated
Application:	Western Blotting (WB), Enzyme Immunoassay (EIA)

Product Details

Immunogen:	KLH conjugated synthetic peptide between 151-181 amino acids from the Central region of human DTWD1
Isotype:	Ig Fraction
Specificity:	This antibody recognizes Human DTWD1 (Center).
Purification:	Affinity Chromatography on Protein A

Target Details

Target:	DTWD1
Alternative Name:	DTWD1 (DTWD1 Products)
Background:	Synonyms: DTW domain-containing protein 1, MDS009

Target Details

Molecular Weight:	35248 Da
Gene ID:	56986
NCBI Accession:	NP_001138427

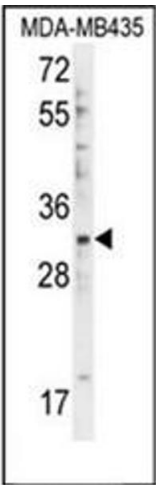
Application Details

Application Notes:	Optimal working dilution should be determined by the investigator.
Restrictions:	For Research Use only

Handling

Format:	Liquid
Concentration:	0.25 mg/mL
Buffer:	PBS containing 0.09 % (W/V) Sodium Azide as preservative
Preservative:	Sodium azide
Precaution of Use:	This product contains sodium azide: a POISONOUS AND HAZARDOUS SUBSTANCE which should be handled by trained staff only.
Handling Advice:	Avoid repeated freezing and thawing.
Storage:	4 °C/-20 °C
Storage Comment:	Store undiluted at 2-8 °C for one month or (in aliquots) at -20 °C for longer.

Images



Western Blotting

Image 1. Western blot analysis in of DTWD1 Antibody (Center) Cat.-No AP51332PU-N in MDA-MB435 cell line lysates (35ug/lane). This demonstrates the DTWD1 antibody detected the DTWD1 protein (arrow).