

Datasheet for ABIN951996  
**anti-DUS1L antibody (C-Term)**[Go to Product page](#)

## 2 Images

## Overview

Quantity:	0.4 mL
Target:	DUS1L
Binding Specificity:	AA 320-349, C-Term
Reactivity:	Human
Host:	Rabbit
Clonality:	Polyclonal
Conjugate:	This DUS1L antibody is un-conjugated
Application:	Western Blotting (WB), Immunohistochemistry (Paraffin-embedded Sections) (IHC (p)), Enzyme Immunoassay (EIA)

## Product Details

Immunogen:	KLH conjugated synthetic peptide between 320-349 amino acids from the C-terminal region of human DUS1L.
Isotype:	Ig Fraction
Specificity:	This antibody recognizes Human DUS1L (C-term).
Purification:	Affinity Chromatography on Protein A

## Target Details

Target:	DUS1L
Alternative Name:	DUS1L ( <a href="#">DUS1L Products</a> )

## Target Details

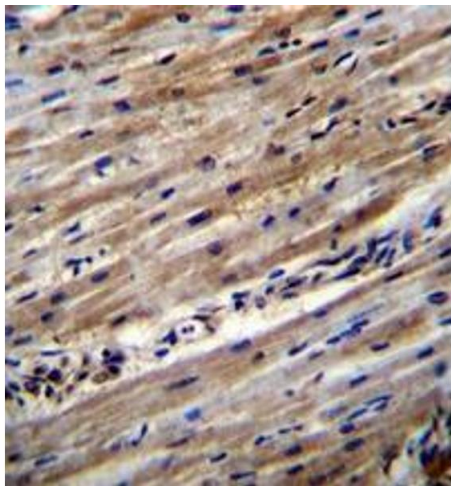
Background:	DUS1L catalyzes the synthesis of dihydrouridine, a modified base found in the D-loop of most tRNAs (By similarity).Synonyms: tRNA-dihydrouridine synthase 1-like
Molecular Weight:	53230 Da
Gene ID:	64118
NCBI Accession:	<a href="#">NP_071439</a>

## Application Details

Application Notes:	Optimal working dilution should be determined by the investigator.
Restrictions:	For Research Use only

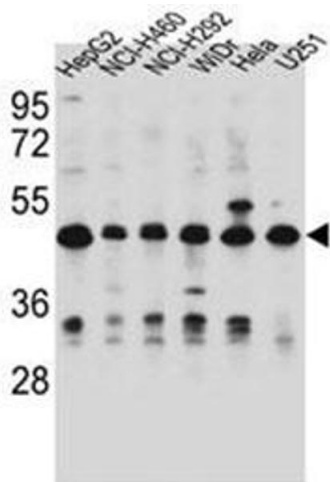
## Handling

Format:	Liquid
Concentration:	0.25 mg/mL
Buffer:	PBS containing 0.09 % (W/V) Sodium Azide as preservative
Preservative:	Sodium azide
Precaution of Use:	This product contains sodium azide: a POISONOUS AND HAZARDOUS SUBSTANCE which should be handled by trained staff only.
Handling Advice:	Avoid repeated freezing and thawing.
Storage:	4 °C/-20 °C
Storage Comment:	Store undiluted at 2-8 °C for one month or (in aliquots) at -20 °C for longer.



**Immunohistochemistry (Paraffin-embedded Sections)**

**Image 1.** Formalin fixed and paraffin embedded human heart tissue reacted with DUS1L Antibody (C-term) followed by peroxidase conjugation of the secondary antibody and DAB staining.



**Western Blotting**

**Image 2.** Western blot analysis of DUS1L Antibody (C-term) in HepG2, NCI-H460, NCI-H292, WiDr, HeLa, U251 cell line lysates (35ug/lane). This demonstrates the DUS1L antibody detected the DUS1L protein (arrow).