

Datasheet for ABIN951998
anti-DUSP2 antibody (C-Term)

2 Images

[Go to Product page](#)

Overview

Quantity:	0.4 mL
Target:	DUSP2
Binding Specificity:	AA 269-298, C-Term
Reactivity:	Human, Mouse
Host:	Rabbit
Clonality:	Polyclonal
Conjugate:	This DUSP2 antibody is un-conjugated
Application:	Western Blotting (WB), Flow Cytometry (FACS), Enzyme Immunoassay (EIA)

Product Details

Immunogen:	KLH conjugated synthetic peptide between 269~298 amino acids from the C-terminal region of Human DUSP2
Isotype:	Ig Fraction
Specificity:	This antibody recognizes Human and Mouse DUSP2 (C-term).
Purification:	Affinity Chromatography on Protein A

Target Details

Target:	DUSP2
Alternative Name:	DUSP2 / PAC1 (DUSP2 Products)
Background:	DUSP2 is a member of the dual specificity protein phosphatase subfamily. These

Target Details

phosphatases inactivate their target kinases by dephosphorylating both the phosphoserine/threonine and phosphotyrosine residues. They negatively regulate members of the mitogen-activated protein (MAP) kinase superfamily (MAPK/ERK, SAPK/JNK, p38), which are associated with cellular proliferation and differentiation. Different members of the family of dual specificity phosphatases show distinct substrate specificities for various MAP kinases, different tissue distribution and subcellular localization, and different modes of inducibility of their expression by extracellular stimuli. Synonyms: Dual specificity protein phosphatase 2, Dual specificity protein phosphatase PAC-1, PAC-1

Molecular Weight:	34400 Da
-------------------	----------

Gene ID:	1844
----------	------

NCBI Accession:	NP_004409
-----------------	---------------------------

Application Details

Application Notes:	Optimal working dilution should be determined by the investigator.
--------------------	--

Restrictions:	For Research Use only
---------------	-----------------------

Handling

Format:	Liquid
---------	--------

Concentration:	0.25 mg/mL
----------------	------------

Buffer:	PBS containing 0.09 % (W/V) Sodium Azide as preservative
---------	--

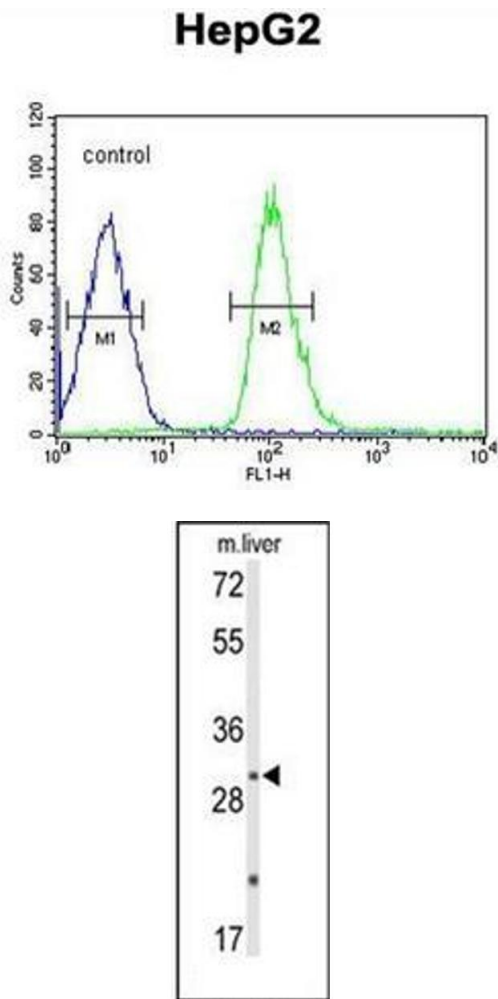
Preservative:	Sodium azide
---------------	--------------

Precaution of Use:	This product contains sodium azide: a POISONOUS AND HAZARDOUS SUBSTANCE which should be handled by trained staff only.
--------------------	--

Handling Advice:	Avoid repeated freezing and thawing.
------------------	--------------------------------------

Storage:	4 °C/-20 °C
----------	-------------

Storage Comment:	Store undiluted at 2-8 °C for one month or (in aliquots) at -20 °C for longer.
------------------	--



Flow Cytometry

Image 1. Flow cytometric analysis of HepG2 cells using DUSP2 / PAC1 Antibody (C-term) Cat.-No AP51339PU-N (right histogram) compared to a negative control cell (left histogram). FITC-conjugated goat-anti-rabbit secondary antibodies were used for the analysis.

Western Blotting

Image 2. Western blot analysis of DUSP2 / PAC1 Antibody (C-term) in mouse liver tissue lysates (35ug/lane). DUSP2 (arrow) was detected using the purified Pab.