

Datasheet for ABIN952012
anti-EAPP antibody (C-Term)

2 Images



[Go to Product page](#)

Overview

Quantity:	0.4 mL
Target:	EAPP
Binding Specificity:	AA 203-233, C-Term
Reactivity:	Human
Host:	Rabbit
Clonality:	Polyclonal
Conjugate:	This EAPP antibody is un-conjugated
Application:	Western Blotting (WB), Immunohistochemistry (Paraffin-embedded Sections) (IHC (p)), Enzyme Immunoassay (EIA)

Product Details

Immunogen:	KLH conjugated synthetic peptide between 203-233 amino acids from the C-terminal region of human EAPP
Isotype:	Ig Fraction
Specificity:	This antibody recognizes Human EAPP (C-term).
Purification:	Affinity Chromatography on Protein A

Target Details

Target:	EAPP
Abstract:	EAPP Products

Target Details

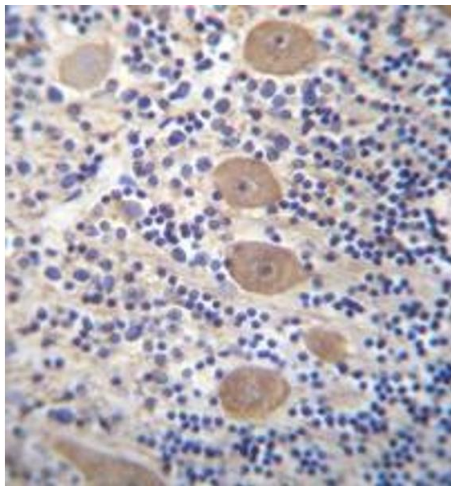
Background:	This gene encodes a phosphoprotein that interacts with several members of the E2F family of proteins. The protein localizes to the nucleus, and is present throughout the cell cycle except during mitosis. It functions to modulate E2F-regulated transcription and stimulate proliferation.Synonyms: BM036l, C14orf11, EAPP, FLJ20578, MGC4957
Molecular Weight:	32762 Da
Gene ID:	55837
NCBI Accession:	NP_060923

Application Details

Application Notes:	Optimal working dilution should be determined by the investigator.
Restrictions:	For Research Use only

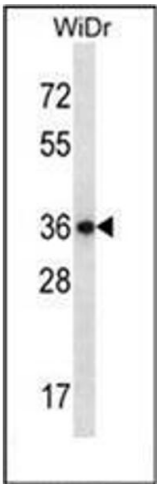
Handling

Format:	Liquid
Concentration:	0.25 mg/mL
Buffer:	PBS containing 0.09 % (W/V) Sodium Azide as preservative
Preservative:	Sodium azide
Precaution of Use:	This product contains sodium azide: a POISONOUS AND HAZARDOUS SUBSTANCE which should be handled by trained staff only.
Handling Advice:	Avoid repeated freezing and thawing.
Storage:	4 °C/-20 °C
Storage Comment:	Store undiluted at 2-8 °C for one month or (in aliquots) at -20 °C for longer.



Immunohistochemistry (Paraffin-embedded Sections)

Image 1. Formalin fixed and paraffin embedded human cerebellum tissue reacted with EAPP Antibody (C-term) followed by peroxidase conjugation of the secondary antibody and DAB staining.



Western Blotting

Image 2. Western blot analysis of EAPP Antibody (C-term) in WiDr cell line lysates (35ug/lane). This demonstrates the EAPP antibody detected the EAPP protein (arrow).