

Datasheet for ABIN952016
anti-EBNA1BP2 antibody (C-Term)



[Go to Product page](#)

1 Image

Overview

Quantity:	0.4 mL
Target:	EBNA1BP2
Binding Specificity:	AA 323-355, C-Term
Reactivity:	Human
Host:	Rabbit
Clonality:	Polyclonal
Conjugate:	This EBNA1BP2 antibody is un-conjugated
Application:	Western Blotting (WB), Enzyme Immunoassay (EIA)

Product Details

Immunogen:	conjugated synthetic peptide between 323-355 amino acids from the C-terminal region of Human EBNA1BP2.
Isotype:	Ig Fraction
Specificity:	This antibody recognizes Human EBNA1BP2 (C-term).
Purification:	Affinity Chromatography on Protein A

Target Details

Target:	EBNA1BP2
Alternative Name:	EBNA1BP2 (EBNA1BP2 Products)
Background:	EBNA1BP2 is required for the processing of the 27S pre-rRNA (By similarity).Synonyms: EBNA1-

Target Details

	binding protein 2, EBP2, Nucleolar protein p40, Probable rRNA-processing protein EBP2
Molecular Weight:	34852 Da
Gene ID:	10969
NCBI Accession:	NP_001153408

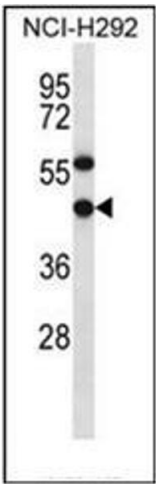
Application Details

Application Notes:	Optimal working dilution should be determined by the investigator.
Restrictions:	For Research Use only

Handling

Format:	Liquid
Concentration:	0.25 mg/mL
Buffer:	PBS containing 0.09 % (W/V) Sodium Azide as preservative
Preservative:	Sodium azide
Precaution of Use:	This product contains sodium azide: a POISONOUS AND HAZARDOUS SUBSTANCE which should be handled by trained staff only.
Handling Advice:	Avoid repeated freezing and thawing.
Storage:	4 °C/-20 °C
Storage Comment:	Store undiluted at 2-8 °C for one month or (in aliquots) at -20 °C for longer.

Images



Western Blotting

Image 1. Western blot analysis of EBNA1BP2 Antibody (C-term) in NCI-H292 cell line lysates (35ug/lane). This demonstrates the EBNA1BP2 antibody detected the EBNA1BP2 protein (arrow).