

Datasheet for ABIN952028
anti-EEFSEC antibody (C-Term)[Go to Product page](#)

2 Images

Overview

Quantity:	0.4 mL
Target:	EEFSEC
Binding Specificity:	AA 547-577, C-Term
Reactivity:	Human, Mouse
Host:	Rabbit
Clonality:	Polyclonal
Conjugate:	This EEFSEC antibody is un-conjugated
Application:	Western Blotting (WB), Immunohistochemistry (Paraffin-embedded Sections) (IHC (p)), Enzyme Immunoassay (EIA)

Product Details

Immunogen:	KLH conjugated synthetic peptide between 547~577 amino acids from the C-terminal region of Human EEFSEC
Isotype:	Ig Fraction
Specificity:	This antibody recognizes Human and Mouse EEFSEC / SELB (C-term).
Purification:	Affinity Chromatography on Protein A

Target Details

Target:	EEFSEC
Alternative Name:	EEFSEC / SELB (EEFSEC Products)

Target Details

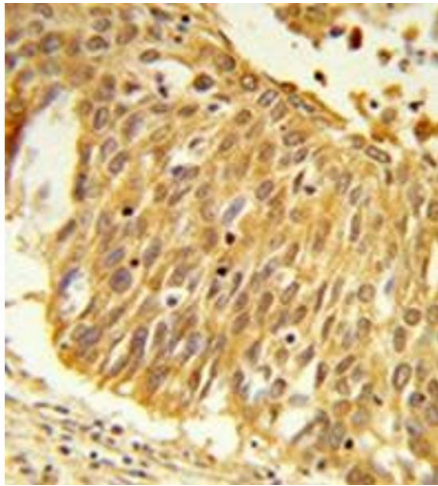
Background:	EEFSEC is a translation factor necessary for the incorporation of selenocysteine into proteins. It probably replaces EF-Tu for the insertion of selenocysteine directed by the UGA codon. SelB binds GTP and GDP.Synonyms: Elongation factor sec, Eukaryotic elongation factor, Selenocysteine-specific elongation factor, selenocysteine-tRNA-specific
Molecular Weight:	65305 Da
Gene ID:	60678
NCBI Accession:	NP_068756

Application Details

Application Notes:	Optimal working dilution should be determined by the investigator.
Restrictions:	For Research Use only

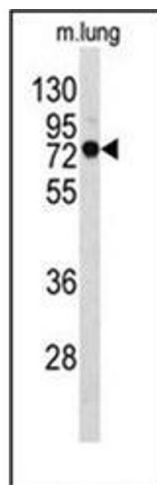
Handling

Format:	Liquid
Concentration:	0.25 mg/mL
Buffer:	PBS containing 0.09 % (W/V) Sodium Azide as preservative
Preservative:	Sodium azide
Precaution of Use:	This product contains sodium azide: a POISONOUS AND HAZARDOUS SUBSTANCE which should be handled by trained staff only.
Handling Advice:	Avoid repeated freezing and thawing.
Storage:	4 °C/-20 °C
Storage Comment:	Store undiluted at 2-8 °C for one month or (in aliquots) at -20 °C for longer.



Immunohistochemistry (Paraffin-embedded Sections)

Image 1. Formalin-fixed and paraffin-embedded human lung carcinoma reacted with EEFSEC / SELB Antibody (C-term) followed which was peroxidase-conjugated to the secondary antibody, followed by DAB staining.



Western Blotting

Image 2. Western blot analysis of EEFSEC / SELB Antibody (C-term) in mouse lung tissue lysates (35ug/lane). EEFSEC (arrow) was detected using the purified Pab.