

Datasheet for ABIN952032
anti-EFHB antibody (N-Term)



[Go to Product page](#)

3 Images

Overview

Quantity:	0.4 mL
Target:	EFHB
Binding Specificity:	AA 1-30, N-Term
Reactivity:	Human
Host:	Rabbit
Clonality:	Polyclonal
Conjugate:	This EFHB antibody is un-conjugated
Application:	Western Blotting (WB), Flow Cytometry (FACS), Immunohistochemistry (Paraffin-embedded Sections) (IHC (p)), Enzyme Immunoassay (EIA)

Product Details

Immunogen:	Synthetic peptide - KLH conjugated - corresponding to the N-terminal region (between 1-30aa) of human EFHB.
Isotype:	Ig Fraction
Specificity:	This antibody recognizes human EFHB at N-term.
Purification:	Purified through a Protein A column followed by peptide affinity purification

Target Details

Target:	EFHB
Alternative Name:	EFHB (EFHB Products)

Target Details

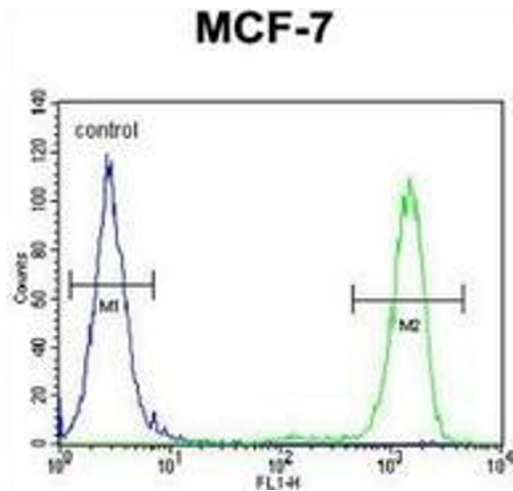
Background:	EFHB contains two EF-hand domains. There are three named isoforms.Synonyms: EF-hand domain-containing family member B
Molecular Weight:	93802 Da
Gene ID:	151651
NCBI Accession:	NP_653316

Application Details

Application Notes:	Optimal working dilution should be determined by the investigator.
Restrictions:	For Research Use only

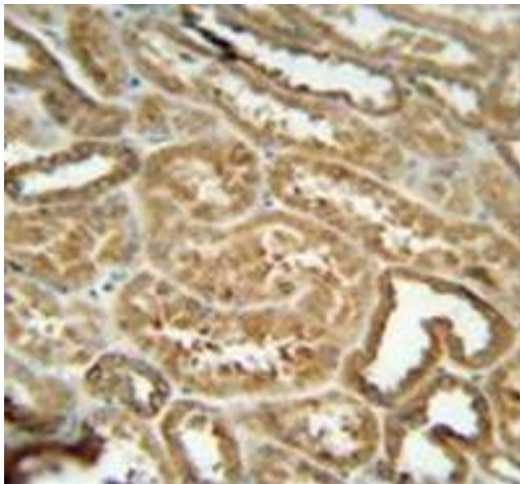
Handling

Format:	Liquid
Concentration:	0.25 mg/mL
Buffer:	PBS with 0.09 % (W/V) Sodium azide
Preservative:	Sodium azide
Precaution of Use:	This product contains sodium azide: a POISONOUS AND HAZARDOUS SUBSTANCE which should be handled by trained staff only.
Handling Advice:	Avoid repeated freezing and thawing.
Storage:	4 °C/-20 °C
Storage Comment:	Store undiluted at 2-8 °C for one month or (in aliquots) at -20 °C for longer.



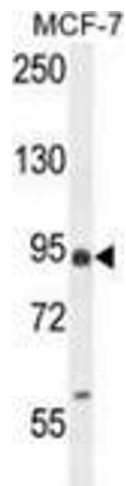
Flow Cytometry

Image 1. Flow cytometric analysis of MCF-7 cells (right histogram) compared to a negative control cell (left histogram) using EFHB Antibody (N-term), followed by FITC-conjugated goat-anti-rabbit secondary antibodies.



Immunohistochemistry (Paraffin-embedded Sections)

Image 2. Immunohistochemistry analysis in human kidney tissue (Formalin-fixed, Paraffin-embedded) using EFHB Antibody (N-term), followed by peroxidase conjugation of the secondary antibody and DAB staining. This data demonstrates the use of this antibody for IHC. Clinical relevance has not been evaluated.



Western Blotting

Image 3. Western blot analysis in MCF-7 cell line lysates (35ug/lane) using EFHB Antibody (N-term). This demonstrates this antibody detected the EFHB protein (arrow).