

Datasheet for ABIN952035  
**anti-EFTUD1 antibody (C-Term)**

4 Images



[Go to Product page](#)

## Overview

Quantity:	0.4 mL
Target:	EFTUD1
Binding Specificity:	AA 1069-1098, C-Term
Reactivity:	Human, Mouse
Host:	Rabbit
Clonality:	Polyclonal
Conjugate:	This EFTUD1 antibody is un-conjugated
Application:	Western Blotting (WB), Immunohistochemistry (Paraffin-embedded Sections) (IHC (p)), Enzyme Immunoassay (EIA)

## Product Details

Immunogen:	KLH conjugated synthetic peptide between 1069-1098 amino acids from the C-terminal region of human EFTUD1
Isotype:	Ig Fraction
Specificity:	This antibody reacts to EFTUD1.
Cross-Reactivity (Details):	Species reactivity (tested): Human and Mouse.
Purification:	Affinity chromatography on Protein A

## Target Details

Target:	EFTUD1
---------	--------

## Target Details

---

Alternative Name:	EFTUD1 ( <a href="#">EFTUD1 Products</a> )
Background:	Synonyms: Elongation factor Tu GTP-binding domain-containing protein 1, FAM42A
Molecular Weight:	125430 Da
Gene ID:	79631
NCBI Accession:	<a href="#">NP_001035700</a>
Pathways:	<a href="#">Ribonucleoprotein Complex Subunit Organization, Ribosome Assembly</a>

## Application Details

---

Application Notes:	Optimal working dilution should be determined by the investigator.
Restrictions:	For Research Use only

## Handling

---

Format:	Liquid
Concentration:	0.25 mg/mL
Buffer:	PBS, 0.09 % (W/V) sodium azide
Preservative:	Sodium azide
Precaution of Use:	This product contains sodium azide: a POISONOUS AND HAZARDOUS SUBSTANCE which should be handled by trained staff only.
Handling Advice:	Avoid repeated freezing and thawing.
Storage:	4 °C/-20 °C
Storage Comment:	Store the antibody undiluted at 2-8 °C for one month or (in aliquots) at -20 °C for longer.



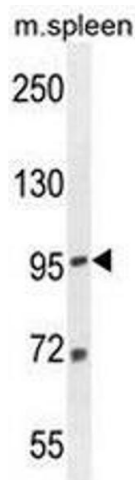
### Immunohistochemistry (Paraffin-embedded Sections)

**Image 1.** EFTUD1 antibody (C-term) immunohistochemistry analysis in formalin fixed and paraffin embedded human skeletal muscle followed by peroxidase conjugation of the secondary antibody and DAB staining. This data demonstrates the use of the EFTUD1 antibody (C-term) for immunohistochemistry. Clinical relevance has not been evaluated.



### Western Blotting

**Image 2.** EFTUD1 Antibody (C-term) western blot analysis in HeLa cell line lysates (35µg/lane). This demonstrates the EFTUD1 antibody detected the EFTUD1 protein (arrow).



### Western Blotting

**Image 3.** EFTUD1 Antibody (C-term) western blot analysis in mouse spleen tissue lysates (35µg/lane). This demonstrates the EFTUD1 antibody detected the EFTUD1 protein (arrow).

Please check the [product details page](#) for more images. Overall 4 images are available for ABIN952035.