



[Go to Product page](#)

Datasheet for ABIN952041
anti-EIF1B antibody (C-Term)

1 Image

Overview

Quantity:	0.4 mL
Target:	EIF1B
Binding Specificity:	AA 83-113, C-Term
Reactivity:	Human
Host:	Rabbit
Clonality:	Polyclonal
Conjugate:	This EIF1B antibody is un-conjugated
Application:	Western Blotting (WB), Enzyme Immunoassay (EIA)

Product Details

Immunogen:	KLH conjugated synthetic peptide between 83-113 amino acids from the C-terminal region of human EIF1B
Isotype:	Ig Fraction
Specificity:	This antibody reacts to EIF1B.
Cross-Reactivity (Details):	Species reactivity (tested):Human.
Purification:	Affinity chromatography on Protein A

Target Details

Target:	EIF1B
Alternative Name:	EIF1B (EIF1B Products)

Target Details

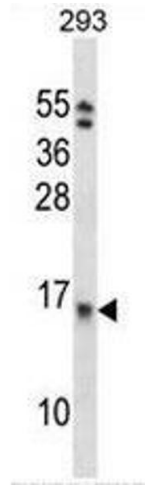
Background:	EIF1B is probably involved in translation.Synonyms: Eukaryotic translation initiation factor 1b, GC20, Protein translation factor SUI1 homolog GC20
Molecular Weight:	12824 Da
Gene ID:	10289
NCBI Accession:	NP_005866

Application Details

Application Notes:	Optimal working dilution should be determined by the investigator.
Restrictions:	For Research Use only

Handling

Format:	Liquid
Concentration:	0.25 mg/mL
Buffer:	PBS, 0.09 % (W/V) sodium azide
Preservative:	Sodium azide
Precaution of Use:	This product contains sodium azide: a POISONOUS AND HAZARDOUS SUBSTANCE which should be handled by trained staff only.
Handling Advice:	Avoid repeated freezing and thawing.
Storage:	4 °C/-20 °C
Storage Comment:	Store the antibody undiluted at 2-8 °C for one month or (in aliquots) at -20 °C for longer.



Western Blotting

Image 1. EIF1B Antibody (C-term) western blot analysis in 293 cell line lysates (35µg/lane). This demonstrates the EIF1B antibody detected the EIF1B protein (arrow).