

Datasheet for ABIN952043  
**anti-EIF2B1 antibody (Middle Region)**

## 2 Images

[Go to Product page](#)

## Overview

Quantity:	0.4 mL
Target:	EIF2B1
Binding Specificity:	AA 135-163, Middle Region
Reactivity:	Human
Host:	Rabbit
Clonality:	Polyclonal
Conjugate:	This EIF2B1 antibody is un-conjugated
Application:	Western Blotting (WB), Immunohistochemistry (Paraffin-embedded Sections) (IHC (p)), Enzyme Immunoassay (EIA)

## Product Details

Immunogen:	KLH conjugated synthetic peptide between 135-163 amino acids from the Central region of human EIF2B1
Isotype:	Ig Fraction
Specificity:	This antibody reacts to EIF2B1.
Cross-Reactivity (Details):	Species reactivity (tested): Human.
Purification:	Affinity chromatography on Protein A

## Target Details

Target:	EIF2B1
---------	--------

## Target Details

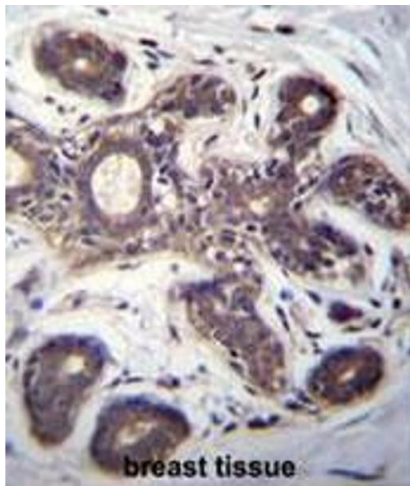
Alternative Name:	EIF2B1 / EIF2BA ( <a href="#">EIF2B1 Products</a> )
Background:	This gene encodes one of five subunits of eukaryotic translation initiation factor 2B (EIF2B), a GTP exchange factor for eukaryotic initiation factor 2 and an essential regulator for protein synthesis. Mutations in this gene and the genes encoding other EIF2B subunits have been associated with leukoencephalopathy with vanishing white matter. Synonyms: Translation initiation factor eIF-2B subunit alpha, eIF-2B GDP-GTP exchange factor subunit alpha
Molecular Weight:	33712 Da
Gene ID:	1967
NCBI Accession:	<a href="#">NP_001405</a>
Pathways:	<a href="#">Methionine Biosynthetic Process</a>

## Application Details

Application Notes:	Optimal working dilution should be determined by the investigator.
Restrictions:	For Research Use only

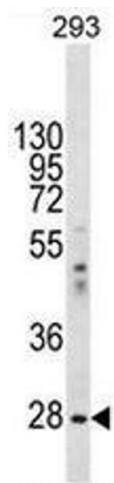
## Handling

Format:	Liquid
Concentration:	0.25 mg/mL
Buffer:	PBS, 0.09 % (W/V) sodium azide
Preservative:	Sodium azide
Precaution of Use:	This product contains sodium azide: a POISONOUS AND HAZARDOUS SUBSTANCE which should be handled by trained staff only.
Handling Advice:	Avoid repeated freezing and thawing.
Storage:	4 °C/-20 °C
Storage Comment:	Store the antibody undiluted at 2-8 °C for one month or (in aliquots) at -20 °C for longer.



#### Immunohistochemistry (Paraffin-embedded Sections)

**Image 1.** EIF2B1 Antibody (Center) immunohistochemistry analysis in formalin fixed and paraffin embedded human breast tissue followed by peroxidase conjugation of the secondary antibody and DAB staining. This data demonstrates the use of EIF2B1 Antibody (Center) for immunohistochemistry. Clinical relevance has not been evaluated.



#### Western Blotting

**Image 2.** EIF2B1 Antibody (Center) western blot analysis in 293 cell line lysates (35µg/lane). This demonstrates the EIF2B1 antibody detected the EIF2B1 protein (arrow).