



[Go to Product page](#)

Datasheet for ABIN952055
anti-EIF5AL1 antibody (C-Term)

3 Images

Overview

Quantity:	0.4 mL
Target:	EIF5AL1
Binding Specificity:	AA 101-130, C-Term
Reactivity:	Human
Host:	Rabbit
Clonality:	Polyclonal
Application:	Western Blotting (WB), Enzyme Immunoassay (EIA)

Product Details

Immunogen:	KLH conjugated synthetic peptide between 101-130 amino acids from the C-terminal region of human EIF5AL1
Isotype:	Ig Fraction
Specificity:	This antibody reacts to EIF5AL1.
Cross-Reactivity (Details):	Species reactivity (tested):Human.
Purification:	Affinity chromatography on Protein A

Target Details

Target:	EIF5AL1
Alternative Name:	EIF5AL1 (EIF5AL1 Products)
Background:	EIF5AL1 is a mRNA-binding protein involved in translation elongation. Has an important function

Target Details

at the level of mRNA turnover, probably acting downstream of decapping. Involved in actin dynamics and cell cycle progression, mRNA decay and probably in a pathway involved in stress response and maintenance of cell wall integrity. Functions as a regulator of apoptosis. Mediates effects of polyamines on neuronal process extension and survival. May play an important role in brain development and function, and in skeletal muscle stem cell differentiation (By similarity).Synonyms: Eukaryotic translation initiation factor 5A-1-like

Molecular Weight: 16773 Da

Gene ID: 143244

NCBI Accession: [NP_001093162](#)

Application Details

Application Notes: Optimal working dilution should be determined by the investigator.

Restrictions: For Research Use only

Handling

Format: Liquid

Concentration: 0.25 mg/mL

Buffer: PBS, 0.09 % (W/V) sodium azide

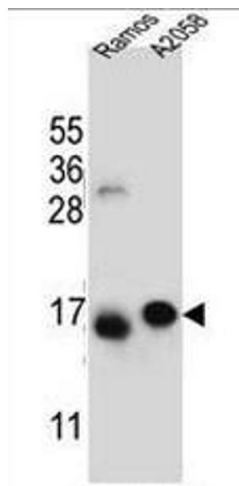
Preservative: Sodium azide

Precaution of Use: This product contains sodium azide: a POISONOUS AND HAZARDOUS SUBSTANCE which should be handled by trained staff only.

Handling Advice: Avoid repeated freezing and thawing.

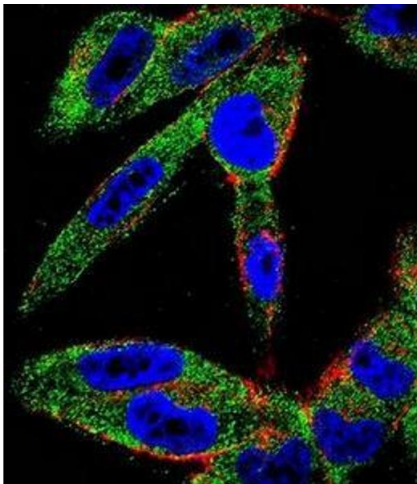
Storage: 4 °C/-20 °C

Storage Comment: Store the antibody undiluted at 2-8 °C for one month or (in aliquots) at -20 °C for longer.



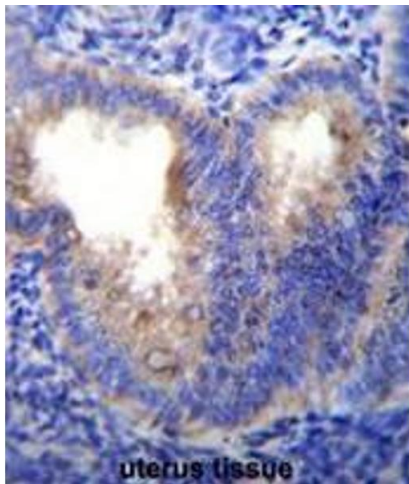
Western Blotting

Image 1. EIF5AL1 Antibody (C-term) western blot analysis in Ramos,A2058 cell line lysates (35µg/lane).This demonstrates the EIF5AL1 antibody detected the EIF5AL1 protein (arrow).



Immunofluorescence

Image 2. Confocal immunofluorescent analysis of EIF5AL1 Antibody (C-term)(Cat#AP51404PU-N) with A2058 cell followed by Alexa Fluor 488-conjugated goat anti-rabbit IgG (green). Actin filaments have been labeled with Alexa Fluor 555 phalloidin (red).DAPI was used to stain the cell nuclear (blue).



Immunohistochemistry (Paraffin-embedded Sections)

Image 3. EIF5AL1 Antibody (C-term) immunohistochemistry analysis in formalin fixed and paraffin embedded human uterus tissue followed by peroxidase conjugation of the secondary antibody and DAB staining.This data demonstrates the use of EIF5AL1 Antibody (C-term) for immunohistochemistry. Clinical relevance has not been evaluated.