

Datasheet for ABIN952057

anti-ELAVL2 antibody (Middle Region)**3** Images[Go to Product page](#)

Overview

Quantity:	0.4 mL
Target:	ELAVL2
Binding Specificity:	AA 155-184, Middle Region
Reactivity:	Human
Host:	Rabbit
Clonality:	Polyclonal
Conjugate:	This ELAVL2 antibody is un-conjugated
Application:	Western Blotting (WB), Enzyme Immunoassay (EIA)

Product Details

Immunogen:	KLH conjugated synthetic peptide between 155-184 amino acids from the Central region of human ELAVL2
Isotype:	Ig Fraction
Specificity:	This antibody reacts to ELAVL2.
Cross-Reactivity (Details):	Species reactivity (tested):Human.
Purification:	Affinity chromatography on Protein A

Target Details

Target:	ELAVL2
Alternative Name:	ELAVL2 / HUB (ELAVL2 Products)

Target Details

Background: The protein encoded by this gene is a neural-specific RNA-binding protein that is known to bind to several 3' UTRs, including its own and also that of FOS and ID. The encoded protein may recognize a GAAA motif in the RNA. Three transcript variants encoding two different isoforms have been found for this gene. Synonyms: ELAV-like neuronal protein 1, ELAV-like protein 2, Hel-N1, Hu-antigen B, Nervous system-specific RNA-binding protein Hel-N1

Molecular Weight: 39504 Da

Gene ID: 1993

NCBI Accession: [NP_001164666](#)

Application Details

Application Notes: Optimal working dilution should be determined by the investigator.

Restrictions: For Research Use only

Handling

Format: Liquid

Concentration: 0.25 mg/mL

Buffer: PBS, 0.09 % (W/V) sodium azide

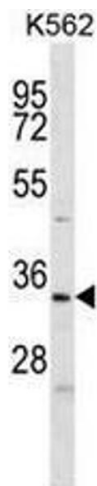
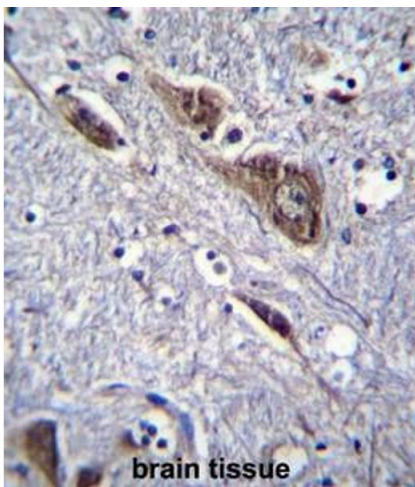
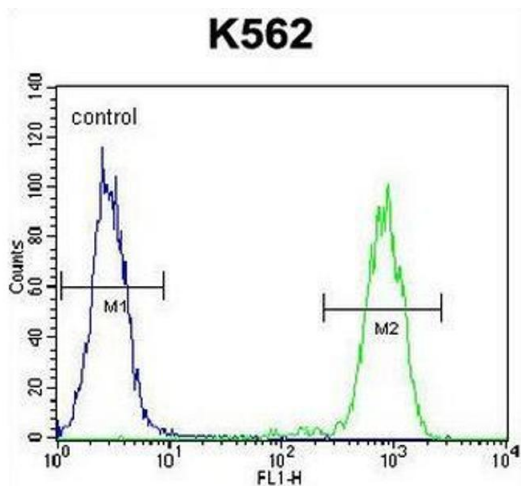
Preservative: Sodium azide

Precaution of Use: This product contains sodium azide: a POISONOUS AND HAZARDOUS SUBSTANCE which should be handled by trained staff only.

Handling Advice: Avoid repeated freezing and thawing.

Storage: 4 °C/-20 °C

Storage Comment: Store the antibody undiluted at 2-8 °C for one month or (in aliquots) at -20 °C for longer.



Flow Cytometry

Image 1. ELAVL2 Antibody (Center) flow cytometric analysis of K562 cells (right histogram) compared to a negative control cell (left histogram).FITC-conjugated goat-anti-rabbit secondary antibodies were used for the analysis.

Immunohistochemistry (Paraffin-embedded Sections)

Image 2. ELAVL2 Antibody (Center) immunohistochemistry analysis in formalin fixed and paraffin embedded human brain tissue followed by peroxidase conjugation of the secondary antibody and DAB staining.This data demonstrates the use of ELAVL2 Antibody (Center) for immunohistochemistry. Clinical relevance has not been evaluated.

Western Blotting

Image 3. ELAVL2 Antibody (Center) western blot analysis in K562 cell line lysates (35µg/lane).This demonstrates the ELAVL2 antibody detected the ELAVL2 protein (arrow).