

Datasheet for ABIN952080

**anti-ENGASE antibody (Middle Region)****3** Images[Go to Product page](#)

## Overview

Quantity:	0.4 mL
Target:	ENGASE
Binding Specificity:	AA 326-354, Middle Region
Reactivity:	Human
Host:	Rabbit
Clonality:	Polyclonal
Conjugate:	This ENGASE antibody is un-conjugated
Application:	Western Blotting (WB), Flow Cytometry (FACS), Immunohistochemistry (Paraffin-embedded Sections) (IHC (p)), Enzyme Immunoassay (EIA)

## Product Details

Immunogen:	KLH conjugated synthetic peptide between 326-354 amino acids from the Central region of Human ENASE
Isotype:	Ig Fraction
Specificity:	This antibody recognizes Human ENASE (Center).
Purification:	Affinity Chromatography on Protein A

## Target Details

Target:	ENGASE
Abstract:	<a href="#">ENGASE Products</a>

## Target Details

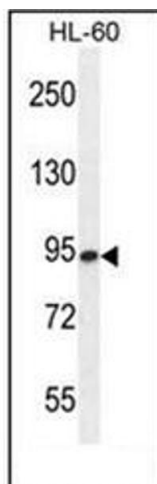
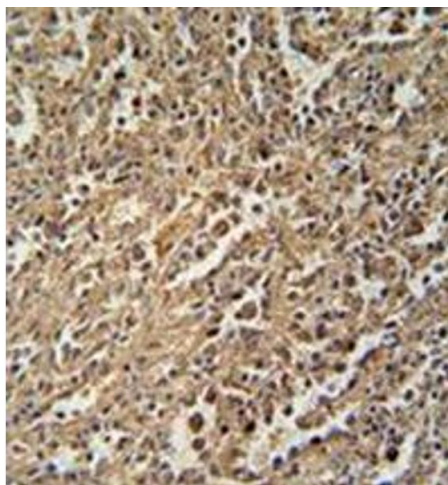
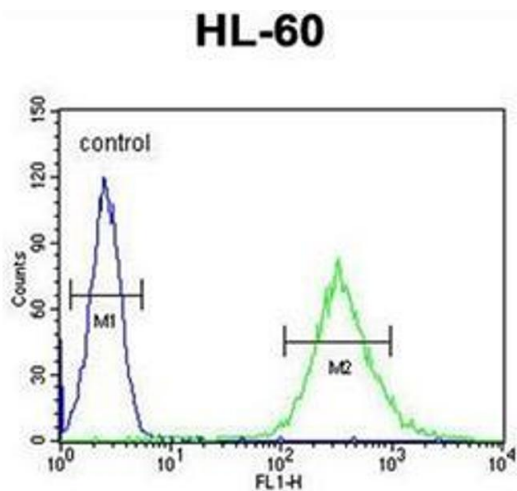
Background:	Endo-beta-N-acetylglucosaminidase (ENGase, EC 3.2.1.96) is involved in the processing of free oligosaccharides in the cytosol.Synonyms: Cytosolic endo-beta-N-acetylglucosaminidase, ENGASE
Molecular Weight:	83987 Da
Gene ID:	64772
NCBI Accession:	<a href="#">NP_001036038</a>

## Application Details

Application Notes:	Optimal working dilution should be determined by the investigator.
Restrictions:	For Research Use only

## Handling

Format:	Liquid
Concentration:	0.25 mg/mL
Buffer:	PBS containing 0.09 % (W/V) Sodium Azide as preservative
Preservative:	Sodium azide
Precaution of Use:	This product contains sodium azide: a POISONOUS AND HAZARDOUS SUBSTANCE which should be handled by trained staff only.
Handling Advice:	Avoid repeated freezing and thawing.
Storage:	4 °C/-20 °C
Storage Comment:	Store undiluted at 2-8 °C for one month or (in aliquots) at -20 °C for longer.



### Flow Cytometry

**Image 1.** Flow cytometric analysis of HL-60 cells using ENASE Antibody (right histogram) compared to a negative control cell (left histogram). FITC-conjugated goat-anti-rabbit secondary antibodies were used for the analysis.

### Immunohistochemistry (Paraffin-embedded Sections)

**Image 2.** Formalin fixed and paraffin embedded human spleen tissue reacted with ENASE Antibody followed by peroxidase conjugation of the secondary antibody and DAB staining.

### Western Blotting

**Image 3.** Western blot analysis of ENASE Antibody in HL-60 cell line lysates (35ug/lane). This demonstrates the ENASE antibody detected the ENASE protein (arrow).