

Datasheet for ABIN952083  
**anti-Endothelin 1 antibody (Middle Region)**[Go to Product page](#)

## 4 Images

## Overview

Quantity:	0.4 mL
Target:	Endothelin 1 (EDN1)
Binding Specificity:	AA 118-146, Middle Region
Reactivity:	Human
Host:	Rabbit
Clonality:	Polyclonal
Conjugate:	This Endothelin 1 antibody is un-conjugated
Application:	Western Blotting (WB), Immunofluorescence (IF), Immunohistochemistry (Paraffin-embedded Sections) (IHC (p)), Flow Cytometry (FACS), Enzyme Immunoassay (EIA)

## Product Details

Immunogen:	KLH conjugated synthetic peptide between 118-146 amino acids from the Central region of human EDN1
Isotype:	Ig Fraction
Specificity:	This antibody recognizes Human Endothelin-1 (Center).
Purification:	Affinity Chromatography on Protein A

## Target Details

Target:	Endothelin 1 (EDN1)
Alternative Name:	Endothelin-1 ( <a href="#">EDN1 Products</a> )

## Target Details

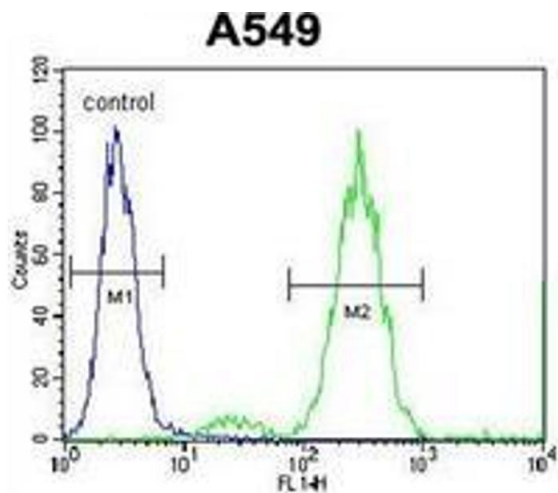
Background:	The protein encoded by this gene is proteolytically processed to release a secreted peptide termed endothelin 1. This peptide is a potent vasoconstrictor and is produced by vascular endothelial cells. Endothelin 1 also can affect the central nervous system. Two transcript variants encoding different isoforms have been found for this gene.Synonyms: EDN1, ET1, HDLCQ7, PPET1, Preproendothelin-1
Molecular Weight:	24425 Da
Gene ID:	1906
NCBI Accession:	<a href="#">NP_001161791</a>
Pathways:	<a href="#">Hormone Transport</a> , <a href="#">Negative Regulation of Hormone Secretion</a> , <a href="#">Regulation of Systemic Arterial Blood Pressure by Hormones</a> , <a href="#">cAMP Metabolic Process</a> , <a href="#">Regulation of Muscle Cell Differentiation</a> , <a href="#">Regulation of G-Protein Coupled Receptor Protein Signaling</a> , <a href="#">Regulation of Cell Size</a>

## Application Details

Application Notes:	Optimal working dilution should be determined by the investigator.
Restrictions:	For Research Use only

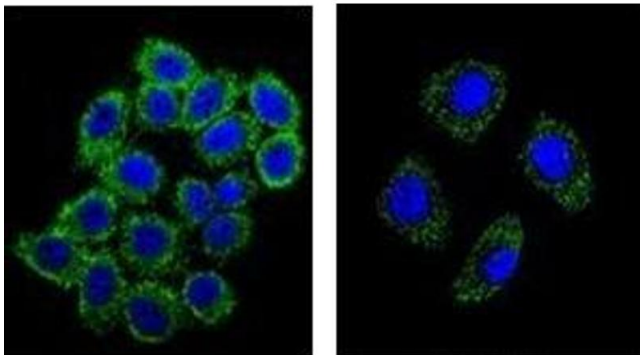
## Handling

Format:	Liquid
Concentration:	0.25 mg/mL
Buffer:	PBS containing 0.09 % (W/V) Sodium Azide as preservative
Preservative:	Sodium azide
Precaution of Use:	This product contains sodium azide: a POISONOUS AND HAZARDOUS SUBSTANCE which should be handled by trained staff only.
Handling Advice:	Avoid repeated freezing and thawing.
Storage:	4 °C/-20 °C
Storage Comment:	Store undiluted at 2-8 °C for one month or (in aliquots) at -20 °C for longer.



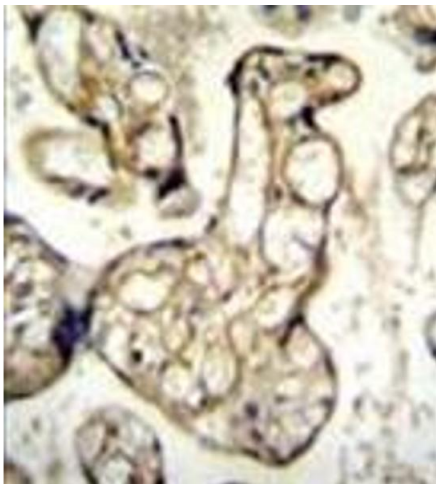
### Flow Cytometry

**Image 1.** Flow cytometric analysis of A549 cells using Endothelin-1 Antibody (right histogram) compared to a negative control cell (left histogram). FITC-conjugated goat-anti-rabbit secondary antibodies were used for the analysis.



### Immunofluorescence

**Image 2.** Confocal immunofluorescent analysis of Endothelin-1 Antibody with A549 cell and followed by Alexa Fluor 488-conjugated goat anti-rabbit IgG (green). DAPI was used to stain the cell nuclear (blue).



### Immunohistochemistry (Paraffin-embedded Sections)

**Image 3.** Formalin fixed and paraffin embedded human placenta tissue reacted with Endothelin-1 Antibody followed by peroxidase conjugation of the secondary antibody and DAB staining.

Please check the [product details page](#) for more images. Overall 4 images are available for ABIN952083.