



[Go to Product page](#)

Datasheet for ABIN952088

anti-ENTHD1 antibody (N-Term)

2 Images

Overview

Quantity:	0.4 mL
Target:	ENTHD1
Binding Specificity:	AA 176-206, N-Term
Reactivity:	Human
Host:	Rabbit
Clonality:	Polyclonal
Conjugate:	This ENTHD1 antibody is un-conjugated
Application:	Western Blotting (WB), Flow Cytometry (FACS), Enzyme Immunoassay (EIA)

Product Details

Immunogen:	KLH conjugated synthetic peptide between 176-206 amino acids from the N-terminal region of Human ENTHD1
Isotype:	Ig Fraction
Specificity:	This antibody recognizes Human ENTHD1 (N-term).
Purification:	Affinity Chromatography on Protein A

Target Details

Target:	ENTHD1
Alternative Name:	ENTHD1 (ENTHD1 Products)
Background:	Synonyms: ENTH domain-containing protein 1

Target Details

Molecular Weight:	67538 Da
Gene ID:	150350
NCBI Accession:	NP_689725

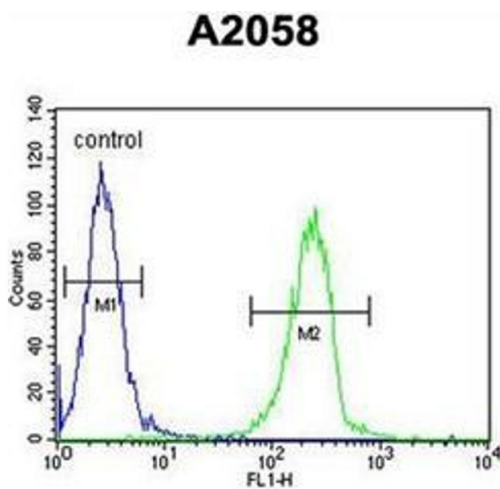
Application Details

Application Notes:	Optimal working dilution should be determined by the investigator.
Restrictions:	For Research Use only

Handling

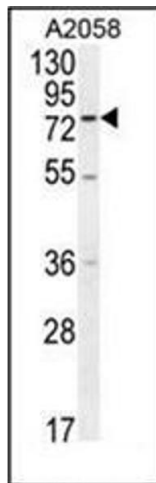
Format:	Liquid
Concentration:	0.25 mg/mL
Buffer:	PBS containing 0.09 % (W/V) Sodium Azide as preservative
Preservative:	Sodium azide
Precaution of Use:	This product contains sodium azide: a POISONOUS AND HAZARDOUS SUBSTANCE which should be handled by trained staff only.
Handling Advice:	Avoid repeated freezing and thawing.
Storage:	4 °C/-20 °C
Storage Comment:	Store undiluted at 2-8 °C for one month or (in aliquots) at -20 °C for longer.

Images



Flow Cytometry

Image 1. Flow cytometric analysis of A2058 cells using ENTHD1 Antibody (N-term) Cat.-No AP51435PU-N (right histogram) compared to a negative control cell (left histogram). FITC-conjugated goat-anti-rabbit secondary antibodies were used for the analysis.



Western Blotting

Image 2. Western blot analysis of ENTHD1 Antibody (N-term) in A2058 cell line lysates (35ug/lane). This demonstrates the ENTHD1 antibody detected the ENTHD1 protein (arrow).