

Datasheet for ABIN952090

anti-ENTPD2 antibody (N-Term)**3** Images[Go to Product page](#)

Overview

Quantity:	0.4 mL
Target:	ENTPD2
Binding Specificity:	AA 92-122, N-Term
Reactivity:	Human
Host:	Rabbit
Clonality:	Polyclonal
Conjugate:	This ENTPD2 antibody is un-conjugated
Application:	Western Blotting (WB), Flow Cytometry (FACS), Immunohistochemistry (Paraffin-embedded Sections) (IHC (p)), Enzyme Immunoassay (EIA)

Product Details

Immunogen:	KLH conjugated synthetic peptide between 92~122 amino acids from the N-terminal region of Human ENTPD2.
Isotype:	Ig Fraction
Specificity:	This antibody recognizes Human ENTPD2 / CD39L1 (N-term).
Purification:	Affinity Chromatography on Protein A

Target Details

Target:	ENTPD2
Alternative Name:	ENTPD2 / CD39L1 (ENTPD2 Products)

Target Details

Background: ENTPD2 is the type 2 enzyme of the ecto-nucleoside triphosphate diphosphohydrolase family (E-NTPDase). E-NTPDases are a family of ecto-nucleosidases that hydrolyze 5'-triphosphates. This ecto-ATPase is an integral membrane protein. Synonyms: CD39 antigen-like 1, Ecto-ATP diphosphohydrolase 2, Ecto-ATPase, Ectonucleoside triphosphate diphosphohydrolase 2, NTPDase 2

Molecular Weight: 53665 Da

Gene ID: 954

NCBI Accession: [NP_001237](#)

Application Details

Application Notes: Optimal working dilution should be determined by the investigator.

Restrictions: For Research Use only

Handling

Format: Liquid

Concentration: 0.25 mg/mL

Buffer: PBS containing 0.09 % (W/V) Sodium Azide as preservative

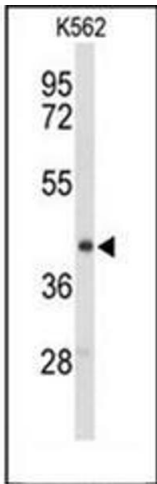
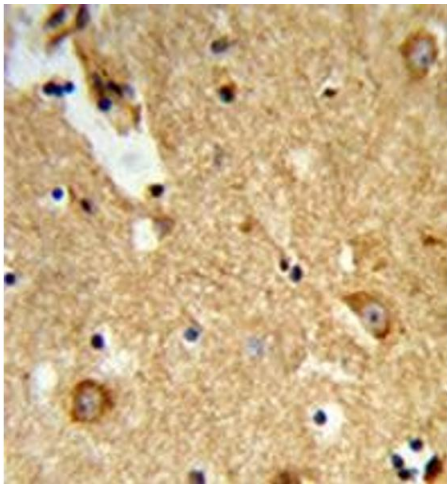
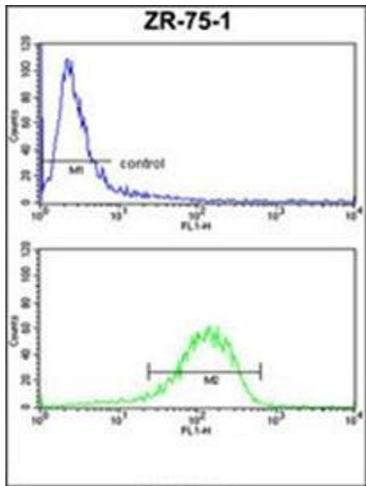
Preservative: Sodium azide

Precaution of Use: This product contains sodium azide: a POISONOUS AND HAZARDOUS SUBSTANCE which should be handled by trained staff only.

Handling Advice: Avoid repeated freezing and thawing.

Storage: 4 °C/-20 °C

Storage Comment: Store undiluted at 2-8 °C for one month or (in aliquots) at -20 °C for longer.



Flow Cytometry

Image 1. Flow Cytometry analysis of ZR-75-1 cells using ENTPD2 / CD39L1 Antibody (N-term) Cat.-No AP51438PU-N (bottom histogram) compared to a negative control cell (top histogram). FITC-conjugated goat-anti-rabbit secondary antibodies were used for the analysis.

Immunohistochemistry (Paraffin-embedded Sections)

Image 2. Formalin-fixed and paraffin-embedded human brain tissue reacted with ENTPD2 / CD39L1 Antibody (N-term) followed which was peroxidase-conjugated to the secondary antibody, followed by DAB staining.

Western Blotting

Image 3. Western blot analysis of ENTPD2 / CD39L1 Antibody (N-term) in K562 cell line lysates (35ug/lane). ENTPD2 (arrow) was detected using the purified Pab.