

Datasheet for ABIN952098

**anti-Epsin 1 antibody (Middle Region)**[Go to Product page](#)**1** Image

## Overview

Quantity:	0.4 mL
Target:	Epsin 1 (EPN1)
Binding Specificity:	AA 202-232, Middle Region
Reactivity:	Human
Host:	Rabbit
Clonality:	Polyclonal
Conjugate:	This Epsin 1 antibody is un-conjugated
Application:	Western Blotting (WB), Enzyme Immunoassay (EIA)

## Product Details

Immunogen:	KLH conjugated synthetic peptide between 202-232 amino acids from the Central region of Human Epsin-1 Genename: EPN1
Isotype:	Ig Fraction
Specificity:	This antibody recognizes Human Epsin-1 (Center).
Purification:	Affinity Chromatography on Protein A

## Target Details

Target:	Epsin 1 (EPN1)
Alternative Name:	Epsin-1 ( <a href="#">EPN1 Products</a> )
Background:	EPN1 is an endocytic accessory protein that interacts with EPS15 (MIM 600051), the alpha

## Target Details

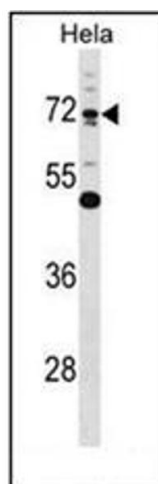
	subunit of the clathrin adaptor AP2 (AP2A1, MIM 601026), and clathrin (see MIM 118960), as well as with other accessory proteins for the endocytosis of clathrin-coated vesicles.Synonyms: EH domain-binding mitotic phosphoprotein, EPN1, EPS-15-interacting protein 1
Molecular Weight:	57575 Da
Gene ID:	29924
NCBI Accession:	<a href="#">NP_037465</a>
Pathways:	<a href="#">EGFR Signaling Pathway</a> , <a href="#">EGFR Downregulation</a>

## Application Details

Application Notes:	Optimal working dilution should be determined by the investigator.
Restrictions:	For Research Use only

## Handling

Format:	Liquid
Concentration:	0.25 mg/mL
Buffer:	PBS containing 0.09 % (W/V) Sodium Azide as preservative
Preservative:	Sodium azide
Precaution of Use:	This product contains sodium azide: a POISONOUS AND HAZARDOUS SUBSTANCE which should be handled by trained staff only.
Handling Advice:	Avoid repeated freezing and thawing.
Storage:	4 °C/-20 °C
Storage Comment:	Store undiluted at 2-8 °C for one month or (in aliquots) at -20 °C for longer.



#### Western Blotting

**Image 1.** Western blot analysis of Epsin-1 Antibody in HeLa cell line lysates (35ug/lane). This demonstrates the EPN1 antibody detected the EPN1 protein (arrow).