



[Go to Product page](#)

Datasheet for ABIN952103

anti-ERCC8 antibody (Middle Region)

2 Images

Overview

Quantity:	0.4 mL
Target:	ERCC8
Binding Specificity:	AA 210-238, Middle Region
Reactivity:	Human, Mouse
Host:	Rabbit
Clonality:	Polyclonal
Conjugate:	This ERCC8 antibody is un-conjugated
Application:	Western Blotting (WB), Immunohistochemistry (Paraffin-embedded Sections) (IHC (p)), Enzyme Immunoassay (EIA)

Product Details

Immunogen:	KLH conjugated synthetic peptide between 210-238 amino acids from the Central region of Human ERCC8
Isotype:	Ig Fraction
Specificity:	This antibody recognizes Human and Mouse ERCC8 (Center).
Purification:	Affinity Chromatography on Protein A

Target Details

Target:	ERCC8
Alternative Name:	ERCC8 (ERCC8 Products)

Target Details

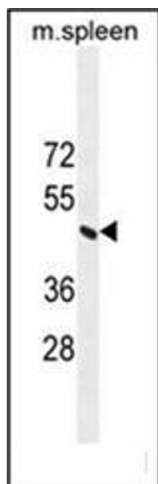
Background:	This gene encodes a WD repeat protein, which interacts with Cockayne syndrome type B (CSB) protein and with p44 protein, a subunit of the RNA polymerase II transcription factor IIH. Mutations in this gene have been identified in patients with hereditary disease Cockayne syndrome (CS). CS cells are abnormally sensitive to ultraviolet radiation and are defective in the repair of transcriptionally active genes. Synonyms: CKN1, CSA, Cockayne syndrome WD repeat protein CSA, DNA excision repair protein ERCC-8, ERCC-8
Molecular Weight:	44055 Da
Gene ID:	1161
NCBI Accession:	NP_000073
Pathways:	DNA Damage Repair, Positive Regulation of Response to DNA Damage Stimulus

Application Details

Application Notes:	Optimal working dilution should be determined by the investigator.
Restrictions:	For Research Use only

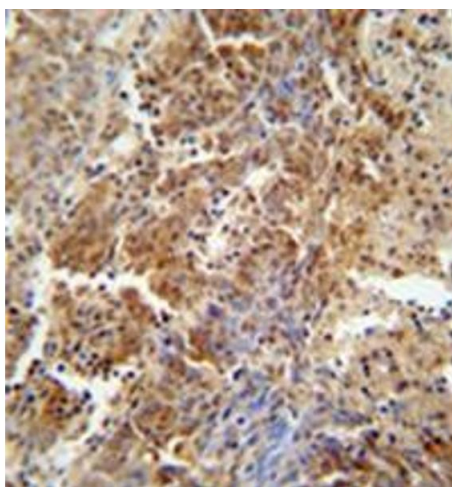
Handling

Format:	Liquid
Concentration:	0.25 mg/mL
Buffer:	PBS containing 0.09 % (W/V) Sodium Azide as preservative
Preservative:	Sodium azide
Precaution of Use:	This product contains sodium azide: a POISONOUS AND HAZARDOUS SUBSTANCE which should be handled by trained staff only.
Handling Advice:	Avoid repeated freezing and thawing.
Storage:	4 °C/-20 °C
Storage Comment:	Store undiluted at 2-8 °C for one month or (in aliquots) at -20 °C for longer.



Western Blotting

Image 1. Western blot analysis of ERCC8 Antibody in mouse spleen tissue lysates (35ug/lane). This demonstrates the ERCC8 antibody detected the ERCC8 protein (arrow).



Immunohistochemistry (Paraffin-embedded Sections)

Image 2. Formalin fixed and paraffin embedded human lung carcinoma reacted with ERCC8 Antibody followed by peroxidase conjugation of the secondary antibody and DAB staining.