

Datasheet for ABIN952105
anti-ERGIC3 antibody (N-Term)[Go to Product page](#)

3 Images

Overview

Quantity:	0.4 mL
Target:	ERGIC3
Binding Specificity:	AA 1-30, N-Term
Reactivity:	Human
Host:	Rabbit
Clonality:	Polyclonal
Conjugate:	This ERGIC3 antibody is un-conjugated
Application:	Western Blotting (WB), Immunohistochemistry (Paraffin-embedded Sections) (IHC (p)), Enzyme Immunoassay (EIA)

Product Details

Immunogen:	KLH conjugated synthetic peptide between 1~30 amino acids from the N-terminal region of Human ERGIC3
Isotype:	Ig Fraction
Specificity:	This antibody recognizes Human ERGIC3 (N-term).
Purification:	Affinity Chromatography on Protein A

Target Details

Target:	ERGIC3
Alternative Name:	ERGIC3 (ERGIC3 Products)

Target Details

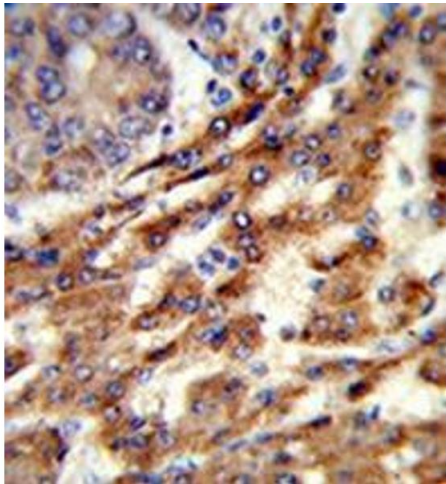
Background:	ERGIC3 is possible role in transport between endoplasmic reticulum and Golgi.Synonyms: C20orf47, CGI-54, ERV46, Endoplasmic reticulum-Golgi intermediate compartment protein 3, NY-BR-84, PRO0989, SDBCAG84, Serologically defined breast cancer antigen NY-BR-84
Molecular Weight:	43222 Da
Gene ID:	51614
NCBI Accession:	NP_057050

Application Details

Application Notes:	Optimal working dilution should be determined by the investigator.
Restrictions:	For Research Use only

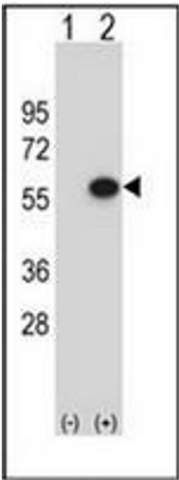
Handling

Format:	Liquid
Concentration:	0.25 mg/mL
Buffer:	PBS containing 0.09 % (W/V) Sodium Azide as preservative
Preservative:	Sodium azide
Precaution of Use:	This product contains sodium azide: a POISONOUS AND HAZARDOUS SUBSTANCE which should be handled by trained staff only.
Handling Advice:	Avoid repeated freezing and thawing.
Storage:	4 °C/-20 °C
Storage Comment:	Store undiluted at 2-8 °C for one month or (in aliquots) at -20 °C for longer.



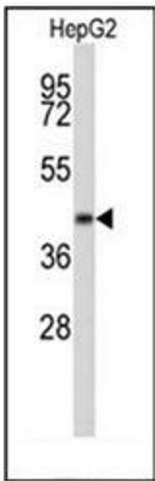
Immunohistochemistry (Paraffin-embedded Sections)

Image 1. Formalin-fixed and paraffin-embedded human hepatocarcinoma reacted with ERGIC3 Antibody (N-term) followed which was peroxidase-conjugated to the secondary antibody, followed by DAB staining.



Western Blotting

Image 2. Western blot analysis of ERGIC3 (arrow) using ERGIC3 Antibody (N-term) Cat.-No AP51453PU-N. 293 cell lysates (2 ug/lane) either nontransfected (Lane 1) or transiently transfected (Lane 2) with the ERGIC3 gene.



Western Blotting

Image 3. Western blot analysis of ERGIC3 Antibody (N-term) in HepG2 cell line lysates (35ug/lane). ERGIC3 (arrow) was detected using the purified Pab.