

Datasheet for ABIN952120  
**anti-ESPNL antibody (C-Term)**[Go to Product page](#)

## 2 Images

## Overview

Quantity:	0.4 mL
Target:	ESPNL
Binding Specificity:	AA 910-940, C-Term
Reactivity:	Human, Mouse
Host:	Rabbit
Clonality:	Polyclonal
Conjugate:	This ESPNL antibody is un-conjugated
Application:	Western Blotting (WB), Enzyme Immunoassay (EIA)

## Product Details

Immunogen:	KLH conjugated synthetic peptide between 910-940 amino acids from the C-terminal region of Human ESPNL.
Isotype:	Ig Fraction
Specificity:	This antibody recognizes Human and Mouse ESPNL (C-term).
Purification:	Affinity Chromatography on Protein A

## Target Details

Target:	ESPNL
Alternative Name:	ESPNL ( <a href="#">ESPNL Products</a> )
Background:	Synonyms: Espin-like protein

## Target Details

Molecular Weight:	108132 Da
Gene ID:	339768
NCBI Accession:	<a href="#">NP_919288</a>

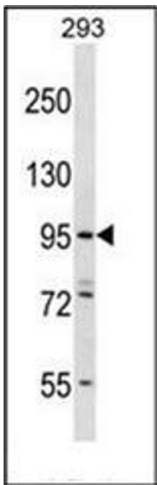
## Application Details

Application Notes:	Optimal working dilution should be determined by the investigator.
Restrictions:	For Research Use only

## Handling

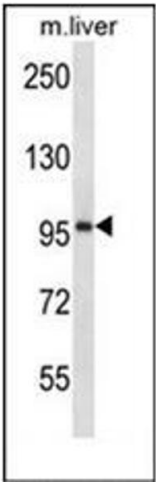
Format:	Liquid
Concentration:	0.25 mg/mL
Buffer:	PBS containing 0.09 % (W/V) Sodium Azide as preservative
Preservative:	Sodium azide
Precaution of Use:	This product contains sodium azide: a POISONOUS AND HAZARDOUS SUBSTANCE which should be handled by trained staff only.
Handling Advice:	Avoid repeated freezing and thawing.
Storage:	4 °C/-20 °C
Storage Comment:	Store undiluted at 2-8 °C for one month or (in aliquots) at -20 °C for longer.

## Images



### Western Blotting

**Image 1.** Western blot analysis of ESPNL Antibody (C-term) in 293 cell line lysates (35ug/lane). This demonstrates the ESPNL antibody detected the ESPNL protein (arrow).



Western Blotting

**Image 2.** Western blot analysis of ESPNL Antibody (C-term) in mouse liver tissue lysates (35ug/lane). This demonstrates the ESPNL antibody detected the ESPNL protein (arrow).