

Datasheet for ABIN952121  
**anti-ESSPL antibody (Middle Region)**[Go to Product page](#)

## 2 Images

## Overview

|                      |  |
|----------------------|--|
| Quantity:            | 0.4 mL   |
| Target:              | ESSPL (PRSS48)   |
| Binding Specificity: | AA 104-134, Middle Region  |
| Reactivity:          | Human  |
| Host:                | Rabbit   |
| Clonality:           | Polyclonal   |
| Application:         | Western Blotting (WB), Flow Cytometry (FACS), Enzyme Immunoassay (EIA) |

## Product Details

|               |  |
|---------------|--|
| Immunogen:    | KLH conjugated synthetic peptide between 104-134 amino acids from the Central region of Human ESSPL. |
| Isotype:      | Ig Fraction  |
| Specificity:  | This antibody recognizes Human ESSPL (Center).   |
| Purification: | Affinity Chromatography on Protein A   |

## Target Details

|                   |  |
|-------------------|--|
| Target:           | ESSPL (PRSS48)   |
| Alternative Name: | ESSPL ( <a href="#">PRSS48 Products</a> )  |
| Background:       | ESSPL belongs to the peptidase S1 family, however, the specific function is not yet known.<br>There are three different isoforms.Synonyms: Epidermis-specific serine protease-like protein |

## Target Details

|                   |                           |
|-------------------|---------------------------|
| Molecular Weight: | 35970 Da                  |
| Gene ID:          | 345062                    |
| NCBI Accession:   | <a href="#">NP_899231</a> |

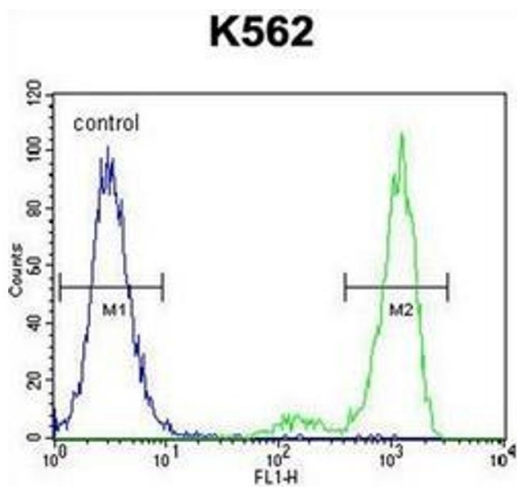
## Application Details

|                    |  |
|--------------------|--|
| Application Notes: | Optimal working dilution should be determined by the investigator. |
| Restrictions:      | For Research Use only  |

## Handling

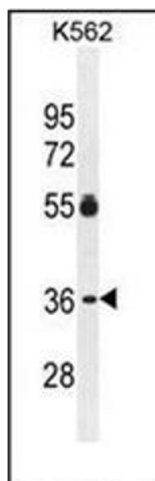
|                    |  |
|--------------------|--|
| Format:            | Liquid   |
| Concentration:     | 0.25 mg/mL   |
| Buffer:            | PBS containing 0.09 % (W/V) Sodium Azide as preservative   |
| Preservative:      | Sodium azide   |
| Precaution of Use: | This product contains sodium azide: a POISONOUS AND HAZARDOUS SUBSTANCE which should be handled by trained staff only. |
| Handling Advice:   | Avoid repeated freezing and thawing.   |
| Storage:           | 4 °C/-20 °C  |
| Storage Comment:   | Store undiluted at 2-8 °C for one month or (in aliquots) at -20 °C to -80 °C for longer.                               |

## Images



### Flow Cytometry

**Image 1.** Flow cytometric analysis of K562 cells using ESSPL Antibody (right histogram) compared to a negative control cell (left histogram). FITC-conjugated goat-anti-rabbit secondary antibodies were used for the analysis.



#### Western Blotting

**Image 2.** Western blot analysis of ESSPL Antibody in K562 cell line lysates (35ug/lane). This demonstrates the ESSPL antibody detected the ESSPL protein (arrow).