

Datasheet for ABIN952125  
**anti-ESRRB antibody (Middle Region)**

## 3 Images

[Go to Product page](#)

## Overview

Quantity:	0.4 mL
Target:	ESRRB
Binding Specificity:	AA 283-312, Middle Region
Reactivity:	Human
Host:	Rabbit
Clonality:	Polyclonal
Application:	Western Blotting (WB), Immunohistochemistry (Paraffin-embedded Sections) (IHC (p)), Flow Cytometry (FACS), Enzyme Immunoassay (EIA)

## Product Details

Immunogen:	KLH conjugated synthetic peptide between 283~312 amino acids from the Center region of Human Estrogen-related receptor beta. Genename: ESRRB
Isotype:	Ig Fraction
Purification:	Affinity Chromatography on Protein A

## Target Details

Target:	ESRRB
Alternative Name:	Estrogen-Related Receptor beta ( <a href="#">ESRRB Products</a> )
Background:	ESRRB encodes a protein with similarity to the estrogen receptor. Its function is unknown, however, a similar protein in mouse plays an essential role in placental development. Synonyms: ERR beta-2, ERR2, ERB2, ESRL2, ESRRB, Estrogen receptor-like 2, NR3B2, Nuclear receptor

## Target Details

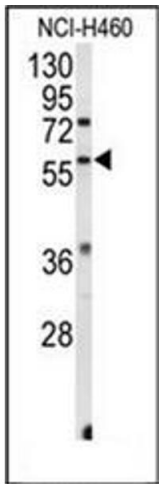
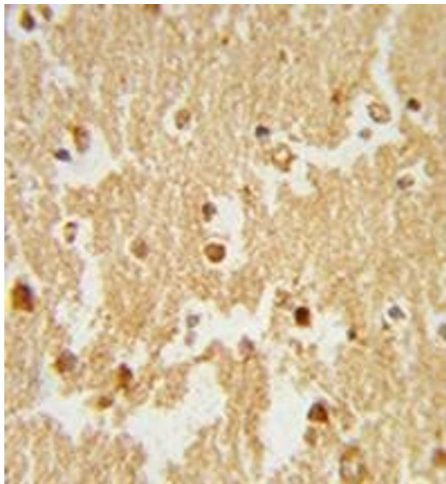
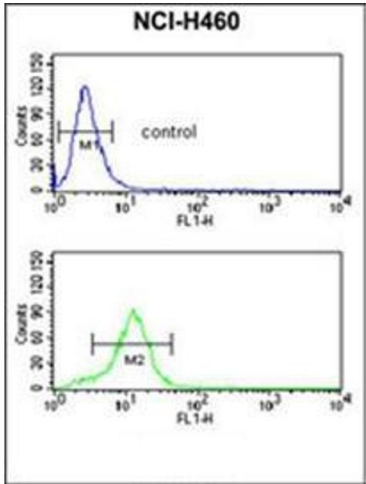
	subfamily 3 group B member 2, Steroid hormone receptor ERR2
Molecular Weight:	55619 Da
Gene ID:	9606
Pathways:	<a href="#">Nuclear Receptor Transcription Pathway</a> , <a href="#">Steroid Hormone Mediated Signaling Pathway</a> , <a href="#">Stem Cell Maintenance</a>

## Application Details

Application Notes:	Optimal working dilution should be determined by the investigator.
Restrictions:	For Research Use only

## Handling

Format:	Liquid
Concentration:	0.25 mg/mL
Buffer:	PBS containing 0.09 % (W/V) Sodium Azide as preservative
Preservative:	Sodium azide
Precaution of Use:	This product contains sodium azide: a POISONOUS AND HAZARDOUS SUBSTANCE which should be handled by trained staff only.
Handling Advice:	Avoid repeated freezing and thawing.
Storage:	4 °C/-20 °C
Storage Comment:	Store undiluted at 2-8 °C for one month or (in aliquots) at -20 °C for longer.



### Flow Cytometry

**Image 1.** Flow cytometric analysis of NCI-H460 cells using ESRRB Antibody (bottom histogram) compared to a negative control cell (top histogram). FITC-conjugated goat-anti-rabbit secondary antibodies were used for the analysis.

### Immunohistochemistry (Paraffin-embedded Sections)

**Image 2.** Formalin-fixed and paraffin-embedded human brain tissue reacted with ESRRB Antibody, which was peroxidase-conjugated to the secondary antibody, followed by DAB staining.

### Western Blotting

**Image 3.** Western blot analysis of ESRRB Antibody in NCI-H460 cell line lysates (35ug/lane). ESRRB (arrow) was detected using the purified Pab.