

Datasheet for ABIN952130  
**anti-ETS1 antibody (N-Term)**



[Go to Product page](#)

3 Images

## Overview

Quantity:	0.4 mL
Target:	ETS1
Binding Specificity:	AA 46-74, N-Term
Reactivity:	Human
Host:	Rabbit
Clonality:	Polyclonal
Conjugate:	This ETS1 antibody is un-conjugated
Application:	Western Blotting (WB), Immunofluorescence (IF), Flow Cytometry (FACS), Enzyme Immunoassay (EIA)

## Product Details

Immunogen:	KLH conjugated synthetic peptide between 46-74 amino acids from the N-terminal region of Human ETS1
Isotype:	Ig Fraction
Specificity:	This antibody recognizes Human ETS1 (N-term).
Purification:	Affinity Chromatography on Protein A

## Target Details

Target:	ETS1
Alternative Name:	ETS1 ( <a href="#">ETS1 Products</a> )

## Target Details

---

**Background:** ETS transcriptions factors, such as ETS1, regulate numerous genes and are involved in stem cell development, cell senescence and death, and tumorigenesis. The conserved ETS domain within these proteins is a winged helix-turn-helix DNA-binding domain that recognizes the core consensus DNA sequence GGAA/T of target genes (summary by Dwyer et al., 2007 [PubMed 17986575]). Synonyms: EWSR2, Protein C-ets-1, p54

**Molecular Weight:** 50408 Da

**Gene ID:** 2113

**NCBI Accession:** [NP\\_005229](#)

## Application Details

---

**Application Notes:** Optimal working dilution should be determined by the investigator.

**Restrictions:** For Research Use only

## Handling

---

**Format:** Liquid

**Concentration:** 0.25 mg/mL

**Buffer:** PBS containing 0.09 % (W/V) Sodium Azide as preservative

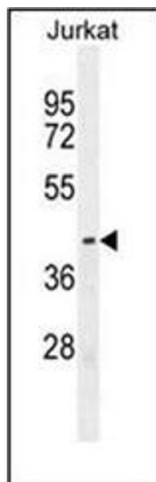
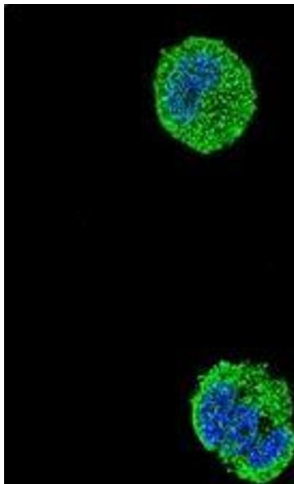
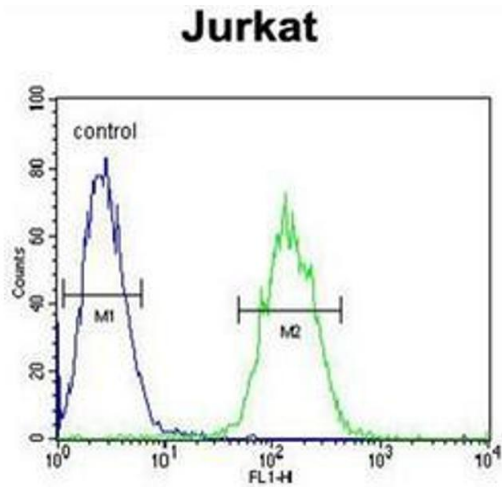
**Preservative:** Sodium azide

**Precaution of Use:** This product contains sodium azide: a POISONOUS AND HAZARDOUS SUBSTANCE which should be handled by trained staff only.

**Handling Advice:** Avoid repeated freezing and thawing.

**Storage:** 4 °C/-20 °C

**Storage Comment:** Store undiluted at 2-8 °C for one month or (in aliquots) at -20 °C for longer.



### Flow Cytometry

**Image 1.** Flow cytometric analysis of Jurkat cells using ETS1 Antibody (N-term) Cat.-No AP51470PU-N (right histogram) compared to a negative control cell (left histogram). FITC-conjugated goat-anti-rabbit secondary antibodies were used for the analysis.

### Immunofluorescence

**Image 2.** Confocal immunofluorescent analysis of ETS1 Antibody (N-term) Cat.-No AP51470PU-N with MCF-7 cell followed by Alexa Fluor<sup>®</sup>488-conjugated goat anti-rabbit IgG (green). DAPI was used to stain the cell nuclear (blue).

### Western Blotting

**Image 3.** Western blot analysis of ETS1 Antibody (N-term) in Jurkat cell line lysates (35ug/lane). This demonstrates the ETS1 antibody detected the ETS1 protein (arrow).