

Datasheet for ABIN952131

anti-ETS2 antibody (Middle Region)



[Go to Product page](#)

3 Images

Overview

| | |
|----------------------|---|
| Quantity: | 0.4 mL |
| Target: | ETS2 |
| Binding Specificity: | AA 152-182, Middle Region |
| Reactivity: | Human |
| Host: | Rabbit |
| Clonality: | Polyclonal |
| Conjugate: | This ETS2 antibody is un-conjugated |
| Application: | Western Blotting (WB), Flow Cytometry (FACS), Immunohistochemistry (Paraffin-embedded Sections) (IHC (p)) |

Product Details

| | |
|---------------|---|
| Immunogen: | KLH conjugated synthetic peptide between 152~182 amino acids from the Central region of Human ETS2. |
| Isotype: | Ig Fraction |
| Specificity: | This antibody recognizes Human ETS2 (Center). |
| Purification: | Protein A column, followed by peptide affinity purification |

Target Details

| | |
|-------------------|--|
| Target: | ETS2 |
| Alternative Name: | ETS2 (ETS2 Products) |

Target Details

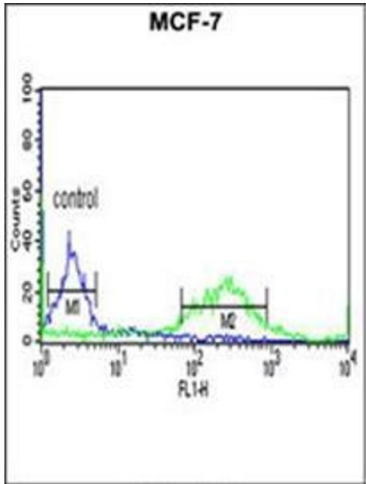
| | |
|-------------------|--|
| Background: | ETS transcriptions factors, such as ETS2, regulate numerous genes and are involved in stem cell development, cell senescence and death, and tumorigenesis. The conserved ETS domain within these proteins is a winged helix-turn-helix DNA-binding domain that recognizes the core consensus DNA sequence GGAA/T of target genes.Synonyms: Protein C-ets-2 |
| Molecular Weight: | 53001 Da |
| Gene ID: | 2114 |
| NCBI Accession: | NP_005230 |
| Pathways: | EGFR Signaling Pathway , Myometrial Relaxation and Contraction |

Application Details

| | |
|--------------------|--|
| Application Notes: | Optimal working dilution should be determined by the investigator. |
| Restrictions: | For Research Use only |

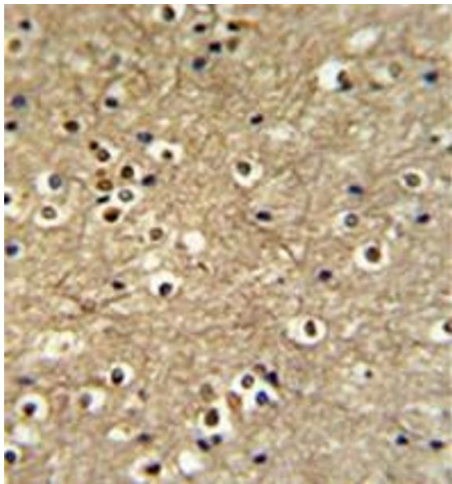
Handling

| | |
|--------------------|--|
| Format: | Liquid |
| Concentration: | 0.25 mg/mL |
| Buffer: | PBS containing 0.09 % (W/V) Sodium Azide as preservative |
| Preservative: | Sodium azide |
| Precaution of Use: | This product contains sodium azide: a POISONOUS AND HAZARDOUS SUBSTANCE which should be handled by trained staff only. |
| Handling Advice: | Avoid repeated freezing and thawing. |
| Storage: | 4 °C/-20 °C |
| Storage Comment: | Store undiluted at 2-8 °C for one month or (in aliquots) at -20 °C for longer. |



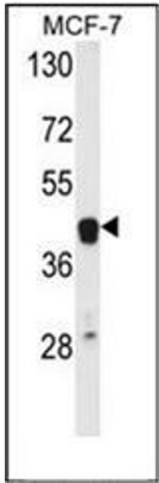
Flow Cytometry

Image 1. Flow cytometric analysis of MCF-7 cells using ETS2 Antibody (Center) Cat.-No AP51471PU-N(right histogram) compared to a negative control cell (left histogram). FITC-conjugated goat-anti-rabbit secondary antibodies were used for the analysis.



Immunohistochemistry (Paraffin-embedded Sections)

Image 2. Formalin fixed and paraffin embedded brain tissue reacted with ETS2 Antibody (Center) followed by peroxidase conjugation of the secondary antibody and DAB staining.



Western Blotting

Image 3. Western blot analysis of ETS2 Antibody (Center) in MCF-7 cell line lysates (35ug/lane). ETS2 (arrow) was detected using the purified Pab.