

Datasheet for ABIN952136
anti-EVI5 antibody (Middle Region)

2 Images

[Go to Product page](#)

Overview

Quantity:	0.4 mL
Target:	EVI5
Binding Specificity:	AA 230-259, Middle Region
Reactivity:	Human, Mouse
Host:	Rabbit
Clonality:	Polyclonal
Application:	Western Blotting (WB), Enzyme Immunoassay (EIA)

Product Details

Immunogen:	KLH conjugated synthetic peptide between 230~259 amino acids from the Center region of human EVI5
Isotype:	Ig Fraction
Specificity:	This antibody recognizes Human and Mouse EVI5 (Center).
Purification:	Affinity Chromatography on Protein A

Target Details

Target:	EVI5
Alternative Name:	EVI5 (EVI5 Products)
Background:	EVI5 is a novel centrosomal protein with a complex expression pattern and subcellular localization, possibly involved in centrosome stability and dynamics. It may act as an oncogene. Synonyms: EVI-5, Ecotropic viral integration site 5 protein homolog, NB4S,

Target Details

	Neuroblastoma stage 4S gene protein
Molecular Weight:	92935 Da
Gene ID:	7813
NCBI Accession:	NP_005656

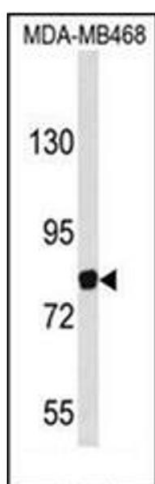
Application Details

Application Notes:	Optimal working dilution should be determined by the investigator.
Restrictions:	For Research Use only

Handling

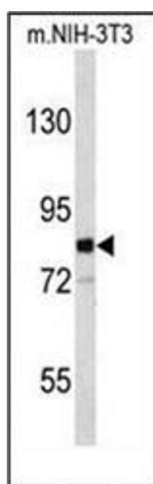
Format:	Liquid
Concentration:	0.25 mg/mL
Buffer:	PBS containing 0.09 % (W/V) Sodium Azide as preservative
Preservative:	Sodium azide
Precaution of Use:	This product contains sodium azide: a POISONOUS AND HAZARDOUS SUBSTANCE which should be handled by trained staff only.
Handling Advice:	Avoid repeated freezing and thawing.
Storage:	4 °C/-20 °C
Storage Comment:	Store undiluted at 2-8 °C for one month or (in aliquots) at -20 °C for longer.

Images



Western Blotting

Image 1. Western blot analysis of EVI5 Antibody (Center) in MDA-MB468 cell line lysates (35ug/lane). EVI5 (arrow) was detected using the purified Pab.



Western Blotting

Image 2. Western blot analysis of EVI5 Antibody (Center) in mouse NIH-3T3 cell line lysates (35ug/lane). EVI5 (arrow) was detected using the purified Pab.