

Datasheet for ABIN952140
anti-EXOC3L1 antibody (C-Term)[Go to Product page](#)

4 Images

Overview

Quantity:	0.4 mL
Target:	EXOC3L1
Binding Specificity:	AA 659-688, C-Term
Reactivity:	Human, Mouse
Host:	Rabbit
Clonality:	Polyclonal
Conjugate:	This EXOC3L1 antibody is un-conjugated
Application:	Western Blotting (WB), Immunofluorescence (IF), Immunohistochemistry (Paraffin-embedded Sections) (IHC (p)), Enzyme Immunoassay (EIA)

Product Details

Immunogen:	KLH conjugated synthetic peptide between 659-688 amino acids from the C-terminal region of human EXOC3L.
Isotype:	Ig Fraction
Specificity:	This antibody recognizes Human and Mouse EXOC3L (C-term).
Purification:	Affinity Chromatography on Protein A

Target Details

Target:	EXOC3L1
Alternative Name:	EXOC3L (EXOC3L1 Products)

Target Details

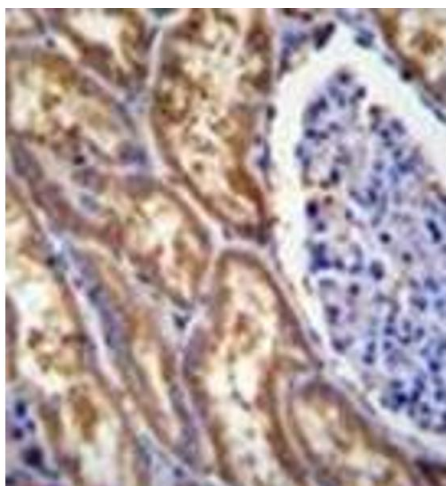
Background:	Synonyms: Exocyst complex component 3-like protein
Molecular Weight:	81678 Da
Gene ID:	283849
NCBI Accession:	NP_848611
Pathways:	Hormone Transport

Application Details

Application Notes:	Optimal working dilution should be determined by the investigator.
Restrictions:	For Research Use only

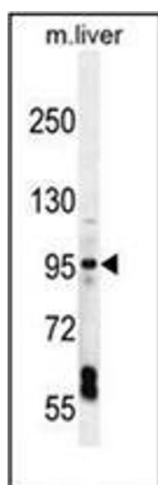
Handling

Format:	Liquid
Concentration:	0.25 mg/mL
Buffer:	PBS containing 0.09 % (W/V) Sodium Azide as preservative
Preservative:	Sodium azide
Precaution of Use:	This product contains sodium azide: a POISONOUS AND HAZARDOUS SUBSTANCE which should be handled by trained staff only.
Handling Advice:	Avoid repeated freezing and thawing.
Storage:	4 °C/-20 °C
Storage Comment:	Store undiluted at 2-8 °C for one month or (in aliquots) at -20 °C for longer.



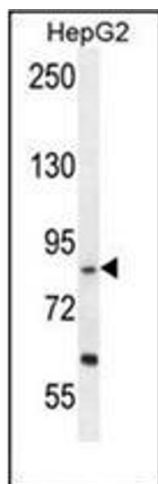
Immunohistochemistry (Paraffin-embedded Sections)

Image 1. Formalin fixed and paraffin embedded human kidney tissue reacted with EXOC3L Antibody (C-term) followed by peroxidase conjugation of the secondary antibody and DAB staining.



Western Blotting

Image 2. Western blot analysis of EXOC3L Antibody



Western Blotting

Image 3. Western blot analysis of EXOC3L Antibody (C-term) in HepG2 cell line lysates (35ug/lane). This demonstrates the EXOC3L antibody detected the EXOC3L protein (arrow).

Please check the [product details page](#) for more images. Overall 4 images are available for ABIN952140.