



[Go to Product page](#)

Datasheet for ABIN952141

## anti-EXOC8 antibody (Middle Region)

### 1 Image

#### Overview

Quantity:	0.4 mL
Target:	EXOC8 (EX084)
Binding Specificity:	AA 367-397, Middle Region
Reactivity:	Human, Mouse
Host:	Rabbit
Clonality:	Polyclonal
Conjugate:	This EXOC8 antibody is un-conjugated
Application:	Western Blotting (WB), Enzyme Immunoassay (EIA)

#### Product Details

Immunogen:	KLH conjugated synthetic peptide between 367-397 amino acids from the Central region of Human EXOC8
Isotype:	Ig Fraction
Specificity:	This antibody recognizes Human and Mouse EXOC8 (Center).
Purification:	Affinity Chromatography on Protein A

#### Target Details

Target:	EXOC8 (EX084)
Alternative Name:	EXOC8 ( <a href="#">EX084 Products</a> )
Background:	Synonyms: Exocyst complex component 8

## Target Details

Molecular Weight: 81799 Da

Gene ID: 149371

NCBI Accession: [NP\\_787072](#)

Pathways: [Peptide Hormone Metabolism](#)

## Application Details

Application Notes: Optimal working dilution should be determined by the investigator.

Restrictions: For Research Use only

## Handling

Format: Liquid

Concentration: 0.25 mg/mL

Buffer: PBS containing 0.09 % (W/V) Sodium Azide as preservative

Preservative: Sodium azide

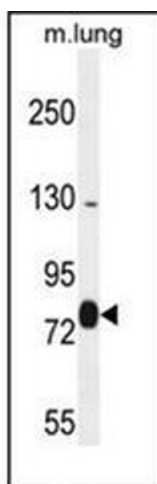
Precaution of Use: This product contains sodium azide: a POISONOUS AND HAZARDOUS SUBSTANCE which should be handled by trained staff only.

Handling Advice: Avoid repeated freezing and thawing.

Storage: 4 °C/-20 °C

Storage Comment: Store undiluted at 2-8 °C for one month or (in aliquots) at -20 °C for longer.

## Images



### Western Blotting

**Image 1.** Western blot analysis of EXOC8 Antibody (Center) in mouse lung tissue lysates (35ug/lane). This demonstrates the EXOC8 antibody detected the EXOC8 protein (arrow).