

Datasheet for ABIN952144

**anti-EXT1 antibody (Middle Region)**[Go to Product page](#)**1** Image

## Overview

Quantity:	0.4 mL
Target:	EXT1
Binding Specificity:	AA 297-326, Middle Region
Reactivity:	Human
Host:	Rabbit
Clonality:	Polyclonal
Conjugate:	This EXT1 antibody is un-conjugated
Application:	Western Blotting (WB), Enzyme Immunoassay (EIA)

## Product Details

Immunogen:	KLH conjugated synthetic peptide between 297-326 amino acids from the Central region of Human EXT1
Isotype:	Ig Fraction
Specificity:	This antibody recognizes Human EXT1 (Center).
Purification:	Affinity Chromatography on Protein A

## Target Details

Target:	EXT1
Alternative Name:	Exostosin-1 ( <a href="#">EXT1 Products</a> )
Background:	This gene encodes an endoplasmic reticulum-resident type II transmembrane

## Target Details

glycosyltransferase involved in the chain elongation step of heparan sulfate biosynthesis. Mutations in this gene cause the type I form of multiple exostoses. [provided by RefSeq].Synonyms: EXT1, Glucuronosyl-N-acetylglucosaminyl-proteoglycan/N-acetylglucosaminyl-proteoglycan 4-alpha-N-acetylglucosaminyltransferase, Multiple exostoses protein 1, Putative tumor suppressor protein EXT1

Molecular Weight: 86255 Da

Gene ID: 2131

NCBI Accession: [NP\\_000118](#)

Pathways: [Glycosaminoglycan Metabolic Process](#)

## Application Details

Application Notes: Optimal working dilution should be determined by the investigator.

Restrictions: For Research Use only

## Handling

Format: Liquid

Concentration: 0.25 mg/mL

Buffer: PBS containing 0.09 % (W/V) Sodium Azide as preservative

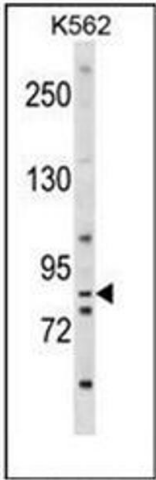
Preservative: Sodium azide

Precaution of Use: This product contains sodium azide: a POISONOUS AND HAZARDOUS SUBSTANCE which should be handled by trained staff only.

Handling Advice: Avoid repeated freezing and thawing.

Storage: 4 °C/-20 °C

Storage Comment: Store undiluted at 2-8 °C for one month or (in aliquots) at -20 °C for longer.



Western Blotting

**Image 1.** Western blot analysis of EXT1 Antibody (Center) in K562 cell line lysates (35ug/lane). This demonstrates the EXT1 antibody detected the EXT1 protein (arrow).