

[Go to Product page](#)

Datasheet for ABIN952146 anti-EXTL2 antibody (C-Term)

2 Images

Overview

Quantity:	0.4 mL
Target:	EXTL2
Binding Specificity:	AA 280-310, C-Term
Reactivity:	Human, Mouse
Host:	Rabbit
Clonality:	Polyclonal
Conjugate:	This EXTL2 antibody is un-conjugated
Application:	Western Blotting (WB), Enzyme Immunoassay (EIA)

Product Details

Immunogen:	KLH conjugated synthetic peptide between 280~310 amino acids from the C-terminal region of human EXTL2.
Isotype:	Ig Fraction
Specificity:	This antibody recognizes Human and Mouse EXTL2 (C-term).
Purification:	Affinity Chromatography on Protein A

Target Details

Target:	EXTL2
Alternative Name:	Exostosin-Like 2 (EXTL2 Products)
Background:	EXTL2 is a glycosyltransferase required for the biosynthesis of heparan-sulfate and responsible

Target Details

for the alternating addition of beta-1-4-linked glucuronic acid (GlcA) and alpha-1-4-linked N-acetylglucosamine (GlcNAc) units to nascent heparan sulfate chains. Synonyms: 4-N-acetylhexosaminyltransferase EXTL2, Alpha-1, Alpha-GalNAcT EXTL2, EXT-related protein 2, EXTR2, Glucuronyl-galactosyl-proteoglycan 4-alpha-N-acetylglucosaminyltransferase

Molecular Weight: 37466 Da

Gene ID: 2135

NCBI Accession: [NP_001028197](#)

Application Details

Application Notes: Optimal working dilution should be determined by the investigator.

Restrictions: For Research Use only

Handling

Format: Liquid

Concentration: 0.25 mg/mL

Buffer: PBS containing 0.09 % (W/V) Sodium Azide as preservative

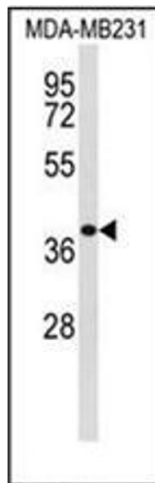
Preservative: Sodium azide

Precaution of Use: This product contains sodium azide: a POISONOUS AND HAZARDOUS SUBSTANCE which should be handled by trained staff only.

Handling Advice: Avoid repeated freezing and thawing.

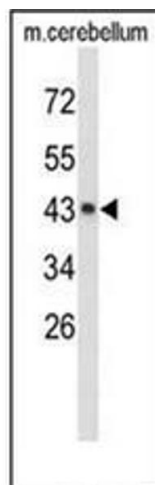
Storage: 4 °C/-20 °C

Storage Comment: Store undiluted at 2-8 °C for one month or (in aliquots) at -20 °C for longer.



Western Blotting

Image 1. Western blot analysis of EXTL2 Antibody (C-term) in MDA-MB231 cell line lysates (35ug/lane). EXTL2 (arrow) was detected using the purified Pab;



Western Blotting

Image 2. Western blot analysis of EXTL2 Antibody (C-term) in mouse cerebellum tissue lysates (35ug/lane). EXTL2 (arrow) was detected using the purified Pab.