

Datasheet for ABIN952147  
**anti-EXTL3 antibody (N-Term)**[Go to Product page](#)

## 2 Images

## Overview

Quantity:	0.4 mL
Target:	EXTL3
Binding Specificity:	AA 352-382, N-Term
Reactivity:	Human
Host:	Rabbit
Clonality:	Polyclonal
Conjugate:	This EXTL3 antibody is un-conjugated
Application:	Western Blotting (WB), Immunohistochemistry (Paraffin-embedded Sections) (IHC (p)), Enzyme Immunoassay (EIA)

## Product Details

Immunogen:	KLH conjugated synthetic peptide between 352-382 amino acids from the N-terminal region of human EXTL3
Isotype:	Ig Fraction
Specificity:	This antibody recognizes Human EXTL3 (N-term).
Purification:	Affinity Chromatography on Protein A

## Target Details

Target:	EXTL3
Alternative Name:	Exostosin-Like 3 ( <a href="#">EXTL3 Products</a> )

## Target Details

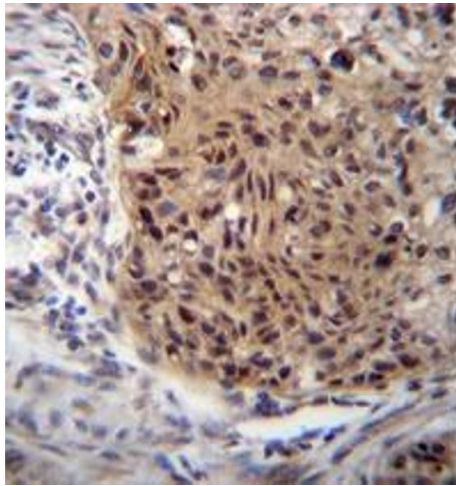
Background:	EXTL3 is probable glycosyltransferase (By similarity).Synonyms: EXT-related protein 1, EXTL1L, EXTR1, Glucuronyl-galactosyl-proteoglycan 4-alpha-N-acetylglucosaminyltransferase, Hereditary multiple exostoses gene isolog, KIAA0519, Multiple exostosis-like protein 3, Putative tumor suppressor protein EXTL3
Molecular Weight:	104749 Da
Gene ID:	2137
NCBI Accession:	<a href="#">NP_001431</a>
Pathways:	<a href="#">Glycosaminoglycan Metabolic Process</a> , <a href="#">ER-Nucleus Signaling</a>

## Application Details

Application Notes:	Optimal working dilution should be determined by the investigator.
Restrictions:	For Research Use only

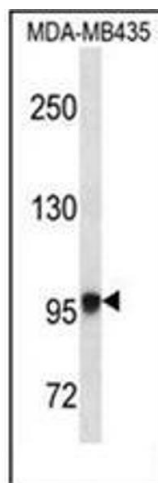
## Handling

Format:	Liquid
Concentration:	0.25 mg/mL
Buffer:	PBS containing 0.09 % (W/V) Sodium Azide as preservative
Preservative:	Sodium azide
Precaution of Use:	This product contains sodium azide: a POISONOUS AND HAZARDOUS SUBSTANCE which should be handled by trained staff only.
Handling Advice:	Avoid repeated freezing and thawing.
Storage:	4 °C/-20 °C
Storage Comment:	Store undiluted at 2-8 °C for one month or (in aliquots) at -20 °C for longer.



#### Immunohistochemistry (Paraffin-embedded Sections)

**Image 1.** Formalin fixed and paraffin embedded human esophageal carcinoma reacted with EXTL3 Antibody (N-term) followed by peroxidase conjugation of the secondary antibody and DAB staining.



#### Western Blotting

**Image 2.** Western blot analysis of EXTL3 Antibody (N-term) in MDA-MB435 cell line lysates (35ug/lane). This demonstrates the EXTL3 antibody detected the EXTL3 protein (arrow).