

Datasheet for ABIN952177

anti-FAM118B antibody (Middle Region)[Go to Product page](#)**1** Image

Overview

Quantity:	0.4 mL
Target:	FAM118B
Binding Specificity:	AA 219-248, Middle Region
Reactivity:	Human
Host:	Rabbit
Clonality:	Polyclonal
Conjugate:	This FAM118B antibody is un-conjugated
Application:	Western Blotting (WB), Enzyme Immunoassay (EIA)

Product Details

Immunogen:	KLH conjugated synthetic peptide between 219-248 amino acids from the Central region of human FAM118B
Isotype:	Ig Fraction
Specificity:	This antibody recognizes Human FAM118B (Center).
Purification:	Affinity Chromatography on Protein A

Target Details

Target:	FAM118B
Alternative Name:	FAM118B (FAM118B Products)
Molecular Weight:	39499 Da

Target Details

Gene ID:	79607
NCBI Accession:	NP_078832

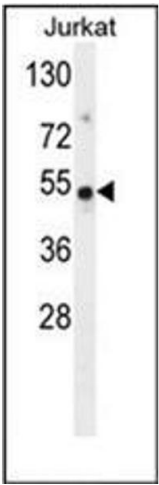
Application Details

Application Notes:	Optimal working dilution should be determined by the investigator.
Restrictions:	For Research Use only

Handling

Format:	Liquid
Concentration:	0.25 mg/mL
Buffer:	PBS containing 0.09 % (W/V) Sodium Azide as preservative
Preservative:	Sodium azide
Precaution of Use:	This product contains sodium azide: a POISONOUS AND HAZARDOUS SUBSTANCE which should be handled by trained staff only.
Handling Advice:	Avoid repeated freezing and thawing.
Storage:	4 °C/-20 °C
Storage Comment:	Store undiluted at 2-8 °C for one month or (in aliquots) at -20 °C for longer.

Images



Western Blotting

Image 1. Western blot analysis of FAM118B Antibody (Center) in Jurkat cell line lysates (35ug/lane). This demonstrates the FAM118B antibody detected the FAM118B protein (arrow).