

Datasheet for ABIN952195  
**anti-FAM155A antibody (N-Term)**

## 2 Images

[Go to Product page](#)

## Overview

Quantity:	0.4 mL
Target:	FAM155A
Binding Specificity:	AA 52-80, N-Term
Reactivity:	Human
Host:	Rabbit
Clonality:	Polyclonal
Conjugate:	This FAM155A antibody is un-conjugated
Application:	Western Blotting (WB), Flow Cytometry (FACS), Enzyme Immunoassay (EIA)

## Product Details

Immunogen:	KLH conjugated synthetic peptide between 52-80 amino acids from the N-terminal region of human FAM155A.
Isotype:	Ig Fraction
Specificity:	This antibody recognizes Human FAM155A (N-term).
Purification:	Affinity Chromatography on Protein A

## Target Details

Target:	FAM155A
Alternative Name:	FAM155A ( <a href="#">FAM155A Products</a> )
Background:	Synonyms: Transmembrane protein

### Target Details

Molecular Weight:	51493 Da
Gene ID:	728215
NCBI Accession:	<a href="#">NP_001073865</a>

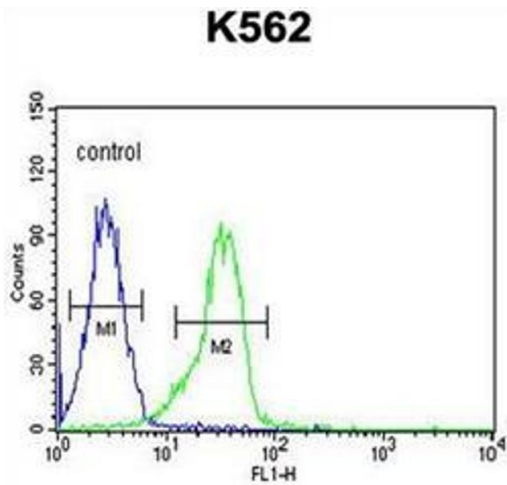
### Application Details

Application Notes:	Optimal working dilution should be determined by the investigator.
Restrictions:	For Research Use only

### Handling

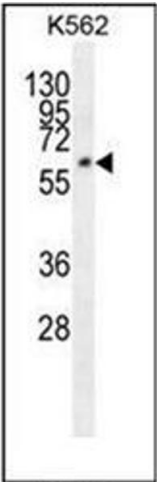
Format:	Liquid
Concentration:	0.25 mg/mL
Buffer:	PBS containing 0.09 % (W/V) Sodium Azide as preservative
Preservative:	Sodium azide
Precaution of Use:	This product contains sodium azide: a POISONOUS AND HAZARDOUS SUBSTANCE which should be handled by trained staff only.
Handling Advice:	Avoid repeated freezing and thawing.
Storage:	4 °C/-20 °C
Storage Comment:	Store undiluted at 2-8 °C for one month or (in aliquots) at -20 °C for longer.

### Images



#### Flow Cytometry

**Image 1.** Flow cytometric analysis of K562 cells using FAM155A Antibody (N-term) Cat.-No AP51542PU-N (right histogram) compared to a negative control cell (left histogram). FITC-conjugated goat-anti-rabbit secondary antibodies were used for the analysis.



Western Blotting

**Image 2.** Western blot analysis of FAM155A Antibody (N-term) in K562 cell line lysates (35ug/lane). This demonstrates the FAM155A antibody detected the FAM155A protein (arrow).