

Datasheet for ABIN952201
anti-F162A antibody (C-Term)[Go to Product page](#)

1 Image

Overview

Quantity:	0.4 mL
Target:	F162A (FAM162A)
Binding Specificity:	AA 118-146, C-Term
Reactivity:	Human, Mouse
Host:	Rabbit
Clonality:	Polyclonal
Conjugate:	This F162A antibody is un-conjugated
Application:	Western Blotting (WB), Enzyme Immunoassay (EIA)

Product Details

Immunogen:	KLH conjugated synthetic peptide between 118-146 amino acids from the C-terminal region of Human FAM162A
Isotype:	Ig Fraction
Specificity:	This antibody recognizes Human and Mouse FAM162A (C-term).
Purification:	Affinity Chromatography on Protein A

Target Details

Target:	F162A (FAM162A)
Alternative Name:	FAM162A (FAM162A Products)
Background:	Synonyms: C3orf28, DC16, E2-induced gene 5 protein, E2IG5, FWP001

Target Details

Molecular Weight:	17342 Da
Gene ID:	26355
NCBI Accession:	NP_055182
Pathways:	Positive Regulation of Endopeptidase Activity , SARS-CoV-2 Protein Interactome

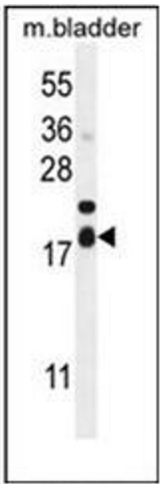
Application Details

Application Notes:	Optimal working dilution should be determined by the investigator.
Restrictions:	For Research Use only

Handling

Format:	Liquid
Concentration:	0.25 mg/mL
Buffer:	PBS containing 0.09 % (W/V) Sodium Azide as preservative
Preservative:	Sodium azide
Precaution of Use:	This product contains sodium azide: a POISONOUS AND HAZARDOUS SUBSTANCE which should be handled by trained staff only.
Handling Advice:	Avoid repeated freezing and thawing.
Storage:	4 °C/-20 °C
Storage Comment:	Store undiluted at 2-8 °C for one month or (in aliquots) at -20 °C for longer.

Images



Western Blotting

Image 1. Western blot analysis of FAM162A Antibody (C-term) in mouse bladder tissue lysates (35ug/lane). This demonstrates the F162A antibody detected the F162A protein (arrow).