

Datasheet for ABIN952227

**anti-STRIP1 antibody (Middle Region)****3** Images[Go to Product page](#)

## Overview

Quantity:	0.4 mL
Target:	STRIP1
Binding Specificity:	AA 359-389, Middle Region
Reactivity:	Human, Mouse
Host:	Rabbit
Clonality:	Polyclonal
Conjugate:	This STRIP1 antibody is un-conjugated
Application:	Western Blotting (WB), Flow Cytometry (FACS), Immunohistochemistry (Paraffin-embedded Sections) (IHC (p))

## Product Details

Immunogen:	KLH conjugated synthetic peptide between 359~389 amino acids from the Central region of human FAM40A
Isotype:	Ig Fraction
Specificity:	This antibody recognizes Human and Mouse FAM40A (Center).
Purification:	Affinity Chromatography on Protein A

## Target Details

Target:	STRIP1
Alternative Name:	FAM40A ( <a href="#">STRIP1 Products</a> )

## Target Details

Background:	Synonyms: KIAA1761, Protein
Molecular Weight:	95576 Da
Gene ID:	85369
NCBI Accession:	<a href="#">NP_149079</a>

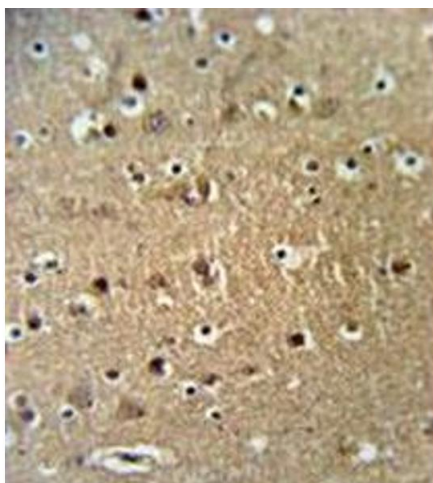
## Application Details

Application Notes:	Optimal working dilution should be determined by the investigator.
Restrictions:	For Research Use only

## Handling

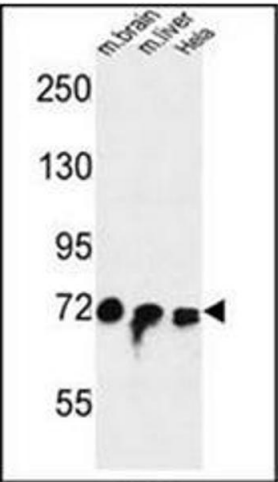
Format:	Liquid
Concentration:	0.25 mg/mL
Buffer:	PBS containing 0.09 % (W/V) Sodium Azide as preservative
Preservative:	Sodium azide
Precaution of Use:	This product contains sodium azide: a POISONOUS AND HAZARDOUS SUBSTANCE which should be handled by trained staff only.
Handling Advice:	Avoid repeated freezing and thawing.
Storage:	4 °C/-20 °C
Storage Comment:	Store undiluted at 2-8 °C for one month or (in aliquots) at -20 °C for longer.

## Images



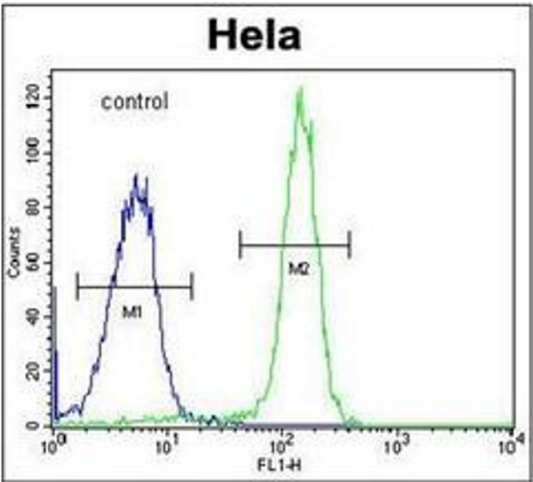
### Immunohistochemistry (Paraffin-embedded Sections)

**Image 1.** Formalin fixed and paraffin embedded brain tissue reacted with FAM40A Antibody followed by peroxidase conjugation of the secondary antibody and DAB staining.



Western Blotting

**Image 2.** Western blot analysis of FAM40A Antibody in mouse brain, liver tissue and Hela cell line lysates (35ug/lane). This demonstrates the FAM40A antibody detected the FAM40A protein (arrow).



Flow Cytometry

**Image 3.** Flow cytometric analysis of Hela cells using FAM40A Antibody (right histogram) compared to a negative control cell (left histogram). FITC-conjugated goat-anti-rabbit secondary antibodies were used for the analysis.